



Pokhara University
School of Business

Accredited by University Grants Commission (UGC)
Nepal (2022)

ANNUAL REPORT

2021/2022



Pokhara University

Faculty of Management Studies

School of Business

Annual Report - 2021/2022 **(Fiscal Year 2078/079)**

**Pokhara Metropolitan City, Ward No. 30
Dhungepatan, Kaski, Nepal
Telephone: +977-061-504147, +977-061-504035
Post Box No. 427
Email: info.sob@pu.edu.np
Website: www.pusob.edu.np**

Table of Contents

Message from the Dean	i
Message from the Director	ii
Executive Summary	iii
Acknowledgements	vi
1. BACKGROUND	1
2. ACADEMIC PROGRESS	3
2.1 Programs	3
2.2 Student Enrolment Trend	3
2.3 Pass Rate Trend	7
2.4 QAA Certification:	9
2.5 Educational Pedagogy	9
2.6 Evaluation and Examination	11
3. PHYSICAL PROGRESS	12
3.1. Infrastructure Development	12
3.2 Educational Aid	12
3.3 Books, Journals and References	13
4. FINANCIAL PROGRESS	14
5. SOCIAL PROGRESS	14
5.1 Innovation, Participation & Celebration	14
5.2 Committee and Cell Activities	15
5.3 Students Activities	16
5.4 International Relations	17
6. REGULAR ACTIVITIES	20
7. ISSUES AND CHALLENGES	21
7.1 Issues	21
7.2 Challenges	21
7.3 Mitigation Strategies	21
7.4 Plan for Addressing the Issues and Challenges	21
Annex 1: Budget for the Fiscal Year - 2079/80	22
Annex 2 List of the Faculty Members	25
Annex 3 List of the Administrative Staff	27
Annex 4 Graduate List	28

Message From the Dean



Thank you for your the Faculty of Management Studies (FMS), School of Business (SOB), Pokhara University. The FMS is committed to scholarly excellence and student success. FMS is an exciting place because it provides an environment that encourages the development of students' talents. We feel proud of its rich culture of providing practical, experience-based business education that our colleges have upheld since its inception. Our academic programs prepare our students for leadership with moral depth and intellectual intensity to fulfill national and international needs.

The FMS is one of the pioneer faculties of Pokhara University. It aims to develop executives and managers for various areas of economic and social life with a high level competence to develop management professionals and entrepreneurs. It supports to enhance the horizon of the knowledge and managerial skills to broaden the outlook of students by inculcating positive attitudes and also make them responsible citizens of the world. The institute offers Bachelors, Masters and Doctoral programs in business studies. The faculty is unique in a sense that majority of faculties have been awarded PhD degree by renowned universities and competent academics. They are actively involved in research witnessed by publications in diverse journals.

Central to the success of our students has been the successful leadership and experience-based knowledge that our faculties bring into the classroom. The knowledge of our faculties continue to drive change both university and the society. We bring to our work a genuine openness to innovation that cultivates the talents of our scholars and creates a culture that builds community. As a Dean, my aim is to improve the significant opportunities for our students to create new knowledge, prepare for careers inside and outside the academy and address the evolving needs of society. We are deeply committed to the work in broadening participation in higher education that leads to more diverse and inclusive scholarly community.

Therefore, I would like to welcome all the perspective students to our colleges for their bright future. Our emphasis will continue to be in creating vibrant and dedicated managers and competent entrepreneurs to meet the challenges of the organizations and society as well. I believe the student will enjoy and make best of their time in Pokhara University School of Business and its affiliated colleges.

With best wishes for your bright academic care

Dr. Daya Raj Dhakal

Dean, Faculty of Management Studies

Pokhara University

Message From the Director



It is a pleasure to present the Annual Report - 2021/22 of the School of Business (SOB), Pokhara University (PU). Some remarkable achievement in this year are SOB got a certificate of Quality Assurance and Accreditation (QAA) from the University Grants Commission (USG), Nepal and it recovered all the operational expenses through self-generated income and securing different grants, particularly from UGC.

In the year 2022, there needed to respond the impacts of the COVID-19 pandemic in academic sector. To manage the overlapping trimesters and semesters, Faculty members and administrative staff have done well by executing most of the educational activities, research, publication, administrative support and necessary inputs to perform the planned activities. Committee and cell members of SOB completed their targeted activities timely. Student clubs have organized innovative programs like book fairs, sports meet, SPSS training, seminar and a talk on the budget of the Government of Nepal.

In this regard, I would like to acknowledge the consent efforts of the Self-Assessment Team members, faculty members, staff, different cell and committee members, and Student Club members. I want to thank every one of the SOB team for their contribution in their respective areas.

Finally, I congratulate the annual report preparation committee members for their dedication to bringing the report in this form. All our concerned students, parents and the general public to visit us in person or via the school website, www.pusob.edu.np, to discover the new developments and grab the opportunities offered by SOB.

All the best,

Shrijan Gyanwali, PhD

Director

School of Business, Pokhara University

Executive Summary

The School of Business started its BBA program in 1999, MBA program in 2000 and BBA-BI program in 2009. The BBA and BBA-BI are four-year semester programs and MBA is two-year trimester Program. The primary aim of these programs is to prepare middle level managers to meet the needs of production and service oriented industries, government and nongovernment organizations in different functional areas of management.

The main objectives of the programs of school of Business are to create educated and skilled manpower throughout the country by making business education available to a large number of populations. The college also arranges guest lectures and training sessions of practitioners and reputed personalities and it conducts many skill development activities in and outside the college for the practical exposure of the students.

Student Enrolment

The student enrolment trend in BBA program for the last five years i.e 2017 to 2021 indicates that the year spring 2021 recorded the highest numbers of students enrolment (427) and the year spring 2017 recorded the lowest enrolment (330). With regards to the enrolment trend of fall semester, the year 2021 recorded the highest number of enrolment (341) and the year fall 2017 recorded the lowest enrolment (324). The student enrolment trend in BBA-BI program for the last five years i.e 2017 to 2021 indicates that the year spring 2021 recorded the highest numbers of students enrolment (191) and the year spring 2020 recorded the lowest enrolment (148). Similarly the enrolment trend of fall semester, the year 2018 recorded the highest number of enrolment (165) and the year fall 2020 recorded the lowest enrolment (146). The enrolment pattern of students in the MBA program in the year 2021/22 show 282.

Pass Rate Trend

The pass percentage rate of students in BBA program for the academic year 2021/2022 revealed that the pass percentage by the seventh semester reached to 96.25%. Similarly, out of 80 exam appearing students in the final semester 77 students passed the examination. The result of pass percentage rate of students in BBA-BI also depicted that the pass percentage by the end of the semester i.e eighth semester reached to 62.96.82%. Similarly, out of 27 exam appearing students in the seventh semester 17 students passed the examination.

Graduate Trend

Total 369 students of MBA, BBA and BBA BI participated in 17 convocation of Pokhara University from School of Business. The total number of student graduate is high because of COVID 19, University was not able to conduct the Convocation annually. As per the graduate list, there were 174 (82 Female and 92 Male) students from MBA Program, 137(Female 80 and Male 57) Students from BBA Program. Similarly 58 Students (Female 36 and Male 22) from BBA-BI Program.

Major Activities of IQAC, School of Business

- School of Business succeeded to receive the certificate of Quality Assurance Accreditations (QAA) from University Grants Commission (UGC), Nepal.
- Sunil Dhakal, students representative, was appointed as a member of this committee after as a successor of Kushal Paudel.

- For this year, twelve meeting of this committee were held including the joint meeting with PRT (Progress Review Team) delegates from UGC.
- Multimedia projectors in the class room are fixed to improve the efficiency for class teaching learning activities.
- Five SOB faculties completed their research work and got final installment of their Faculty Research Grants.
- Orientation and socialization events were conducted for both the students of Masters and Bachelors programs.

Research Journal

JOURNAL OF BUSINESS MANAGEMENT - JBM (ISSN:2350-8868), Volume VI, an academic journal published in this year 2022. The volume includes eight research articles with DOI number.

Graduate Research Projects (GRP) and Project Work

In the year 2021/2022, 85 MBA students successfully completed the registered courses and disseminated their Graduate Research Reports. Similarly, the students of BBA and BBA-BI completed their Project Work within the scheduled time with the proper guidance of the assigned supervisors.

Activities of Students' Club in 2021/22

Sharing Harmony in New Environment (SHINE), Pokhara University Council of Management Students (PUCMS) and Study Group for Banking and Insurance (SGBI) organized book fair, computer training, welcome ceremony for students and seminar on contemporary topics were organized. Class Representatives (CR) of different classes were actively supported to conduct the academic activities, internal examination and extracurricular activities in the school.

Faculty Research Initiative in 2020/2021

During the fiscal year 2020/21, five SOB faculties completed their research under the Faculty Research Grants and the final installment was paid. Faculty Research Grants Committee approved the eight faculty research proposals.



Acknowledgements

It is our privilege to present the Annual Report for the Fiscal Year 2021/022 of School of Business, Faculty of Management Studies, Pokhara University. We are thankful to the administration of School of Business, Pokhara University for providing information and responding to the team in the course of preparing this report. Particularly, we would like to thank Shrijan Gyanwali, Director, School of Business for the supports and suggestions. This report would not have been possible without the guidance and the help of several individuals who in one way or another contributed and extended their valuable involvement in the preparation and completion of this report. We would like to thank all teaching and non-teaching staff of the school for cooperation and response.

The report is an outcome of collective efforts of the team involved in preparing the report and all faculties and staff of School of Business, Pokhara University. It contains genuine information on the various parameters. This report is prepared with honesty, sincerity and dedication as per the guidelines laid down by UGC, Nepal.

Annual Report Preparation Team

Coordinator

Assoc. Prof. Deepanjal Shrestha
Program Coordinator, MBA Program
School of Business, Pokhara University

Members

Kripa Kunwar, Assistant Professor,
Program Coordinator, BBA/BBA-BI
Program, School of Business, PU

Hem Kanta Paudel, Assistant Professor,
School of Business, PU

Pramesh Paudel, Deputy Administrator,
School of Business, PU

Pamod Giri, Dupety Administrator,
School of Business PU.

1. BACKGROUND

The School of Business, established in 1999, is an institution rich in resources with a strong faculty and competitive graduate and undergraduate students. A leading constituent business school of Pokhara University, the Faculty of Management Studies, in an effort to maintain quality education, consistently focuses on individual students' academic growth and professional competence. Its faculty and staff are committed to enhancing students' communication skills by recognizing learners' challenges at the university and in the workplace. The School of Business runs Master of Business Administration (MBA), Bachelor of Business Administration (BBA), and Bachelor of Business Administration in Banking and Insurance (BBA-BI) programs. The School of Business started its BBA program in 1999, its MBA program in 2000, and its BBA-BI program in 2009. The BBA and BBA-BI programs are four-year semester systems, just as the MBA is a two-year trimester system program. The primary aim is to prepare middle-level managers to meet the needs of the business industry, service-oriented industry, government, and nongovernment organizations in different functional areas of management. The teaching team of the School of Business is highly competent, dedicated, and renowned in the academic field. The college also arranges guest lectures and training sessions, inviting academicians and practitioners. Our institution conducts many skill development activities inside and outside the college for the practical exposure of the students.

Vision

The school is driven by the vision to take a leading position in the higher education in management in a competitive business world.

Mission

The school is guided by the mission to provide quality based programs in different areas of administration and management to meet needs and demands of an increasing global market and complex business world. Focus on the "real" world of employment, underpinned by an international research capability based on academic excellence and practical business relevance.

Offer business and management courses that combines a thorough grounding in both management theory and practice with the opportunity to specialize in accounting, finance, human resource management, marketing and international business.

Goals

The school has set goals to:

- Produce market-driven and service-oriented managers and executives with various level of competence through teaching, learning and research.
- Link the PU system with the community and the business world by preparing business graduates with positive attitudes and constructive minds.
- Equip youths with managerial skills and professional expertise to face unprecedented levels of complex operational challenges both at home and abroad.

The School of Business strives to maintain quality education by consistently focusing on academic growth as well as the professional competence of individual students. Its faculties and staff are committed to enhancing students' managerial and communication skills by recognizing learners' challenges at the university and the workplace. The twenty-first century has witnessed uninterrupted expansions in global economics, rapid changes in business systems and technologies, and increasing concerns about business ethics. The university, therefore, believes that any service-oriented private or public organization is responsible for responding to these global concerns. Primarily, the school's vision is to create competent professionals with a sound academic foundation and to achieve this, the school's mission is well articulated. Based on the vision and mission of the

school and input from various stakeholders, the strategic plan of SOB has been drafted. The school's vision, mission, and goals are achieved through a strategic action plan, a schedule for future development, effective leadership, and a participative decision-making process. In addition, the strategic directions for the future instilled and communicated through extended future directions are evidently significant to the growth of the organization. The SOB therefore fully complies with the following extended vision to address these issues and, thus, strives to serve the best interests of people and the global community. With the aim of taking a leading position in higher education in management in a competitive business world, the School of Business firmly believes that effective dissemination of knowledge and skills to students is possible only when the efforts of subject experts, learned teachers, and researchers are backed by much-needed modern equipment and facilities. The twenty-first century has witnessed uninterrupted expansions in global economics, rapid changes in business systems and technologies, and increasing concerns about business ethics. Pokhara University, therefore, believes that it is the responsibility of any service-oriented private or public organization to respond to these global concerns. The School of Business has the vision to address these issues and, thus, serve the best interests of people and the global community. The vision, mission, and goals of the institution are achieved through a strategic action plan, a schedule for future development, effective leadership, and a participative decision-making process. Based on the philosophy of SOB to provide holistic and modern management education in all aspects of teaching, learning, evaluation, research, and extension services, it desires to place itself as a premier business institution. By breaking the barrier between urban and rural students, the school strives to spread education to everyone. A special focus is given to those belonging to the marginalized sections of society, irrespective of caste, creed, religion, or gender. The dean is the head of the institution. He delegated responsibilities to the director, coordinators, faculty members, and staff. He guides, assists, and coordinates the implementation of various decisions. Accountability and transparency in the execution of duties are central to the administration at SOB. The faculty is intimately and organically involved in the decision-making process. All academic and policy decisions are taken in consultation with the faculty members. All administrative bodies have faculty representation. Thus, academic and administrative planning at the institution is well coordinated. At the beginning of the academic year, various departments and members of the administration scrutinize the workload and assess the need for staff recruitment and other infrastructural requirements. This is further scrutinized by the dean. New recruitments are done through a selection process that meets the government criteria for both substantive posts and school-created posts. The institution has a self-appraisal method to evaluate the performance of the faculty in teaching, research, and extension programs. Skill up-gradation and training programs are conducted for the non-teaching staff members when required. The school constantly organizes orientation and faculty development programs. The faculty is encouraged to conduct research and project work leading to their academic development. Thus, the management of human resources is meticulously planned and executed. Effective efforts are also undertaken for resource mobilization. The main sources of grants are the government and the UGC. Apart from this, alumni contribute substantially towards institutional development. The students' fees contribute to resource mobilization. At the beginning of each financial year, the finance committee meets for budget allocation under different headings. The budget is sent for approval to the university authorities and executive council. A periodic review of the budget expenses is made for optimal utilization. There is an internal auditor appointed by the school for internal audits. Further, an external audit is done every financial year. Thus, the available resources are optimally allocated and utilized through efficient financial resource management. The dynamic leadership of the dean and the active participation of the staff, both teaching and non-teaching, in academics and administration, together with effective internal coordination and monitoring by the university and UGC, make it possible for the school to achieve its goals.

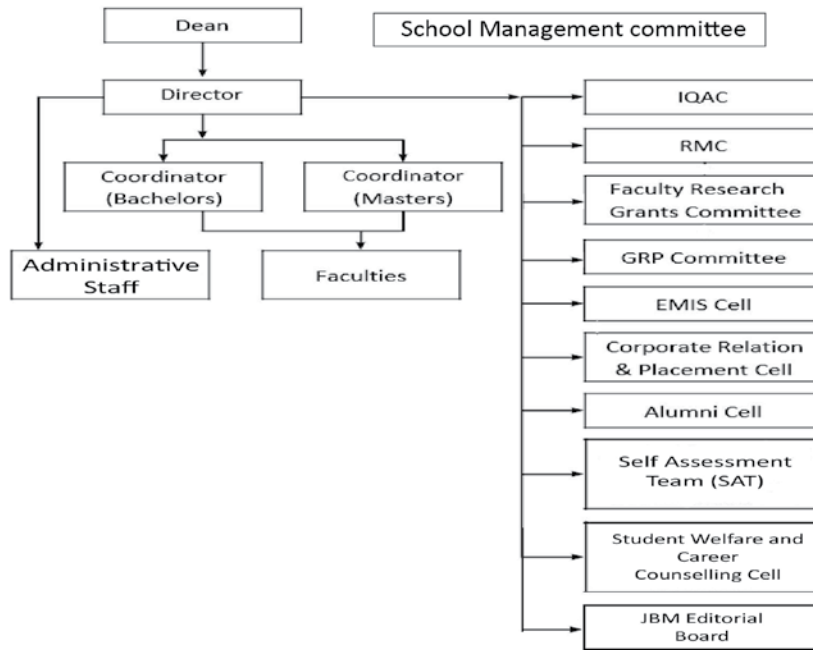


Fig.1 Organizational Structure

2. ACADEMIC PROGRESS

2.1 Programs

MBA (Master of Business Administration) is a general management degree taught from a global perspective that prepares students for a range of management careers. It is a full-time, two-year program that spans six trimesters for the students. The MBA students are required to complete 66 credits, including 27 courses, 3 practical and seminars, 1 graduate research project, and an 8-week internship. However, the school also offers an MBA part-time program, especially for job holders. The BBA program of the School of Business at Pokhara University is designed to promote and prepare students for positions of leadership and responsibility in the areas of business and management. The degree is highly valued by reputed corporate houses and business enterprises. BBA opens many opportunities for its graduates, both as managers and as entrepreneurs. The BBA program has established itself as one of the most widely accepted degrees in the country and abroad. Since its inception in 1999, the School of Business BBA program has received an overwhelming response from the concerned communities. The program covers a period of four academic years spread over eight semesters and 120 credit hours. The program also requires students to complete project work and an internship. The first four semesters are devoted to building the fundamental concept of management. The last four semesters offer elective and specialization courses that enable the students to develop specialized and focused skills and knowledge in the area of their choice. The BBA-BI program is one of the most sought-after degrees in today's highly uncertain world, where financial management and insurance mean a lot to most of us. BBA-BI can address students' needs to adequately understand these specific areas and acquire a competitive edge in shaping their careers. BBA-BI attracts scholars from a wide range of academic disciplines who have dreams of taking a giant leap in their careers. Recognized universally, BBA-BI is a challenging educational program that instills basic management principles in students along with making them conversant in recent trends and practices in banking and insurance. After the completion of the course, students will be able to work as middle-level managers in different banks, insurance companies, and financial institutions.

2.2 Student Enrolment Trend

The main objectives of the programs of school of Business are to create educated and skilled human resources throughout the country by making business education available to a large number of populations.

Currently, SOB is offering programs at undergraduate and graduate levels. It is offering two programs in the undergraduate level and one program in the graduate level. Figure-4 shows that students’ enrolment patterns of the programs of this school.

2.2.1 Student Enrolment Trend (MBA Program)

In the MBA, two intakes are taken annually. In the March intake 60 Full Time students are enrolled. In the August, 30 Full Time students and 30 Job Holder students are enrolled. The enrolment trend from 2019 August to 2022 March is presented in Table 1.

Table 1: Admission Trend in MBA

Detail of Enrolment	Session	Total
I (2022 March Intake)	Full time	60
I (2021 August Intake)	Full time	30
II (2021 March Intake)	Full time	57
IV Trimester (2020 August Intake)	Full time	26
V (2020 March Intake)	Full time	57
I (2021 August Intake)	Job Holder	30
IV (2020 August Intake)	Job Holder	25
III (2019 August Intake)	Job holder	27
Total		312

Table 1 shows 30 (100 percent) students got admission in Job Holder and Full Time in 2021 August. Similarly, 60 students (100 percent) got admission in 2022 March. Least number of students enrolled in 2020 August with 25 students in Job Holder and 26 Students in Full Time. Similar number of students (57) were enrolled in 2020 and 2021 March. The admission trend in MBA program is depicted in the Figure 2.

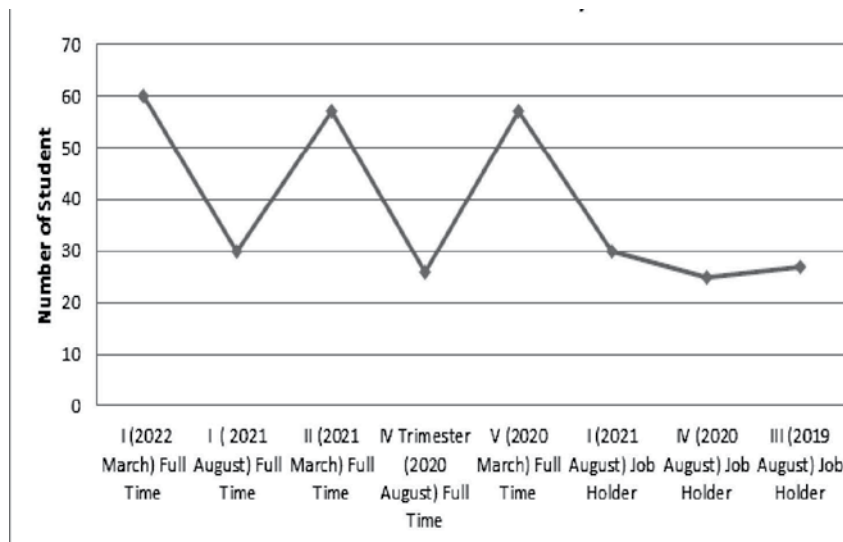


Fig. 2 Admission Trend in MBA

2.2.2 Student Enrolment Trend in Bachelors Level

School of Business Calls admission in BBA and BBA-BI Program in Bachelors Level. The admission trend in two different program is explained in following section.

2.2.2.1 Students Enrolment in BBA Program

Annual 96 students are enrolled in the BBA program. The admission is opened for August intake. The program

is operated in Semester system. Therefore, admission trend can be analyzed in two different semesters, Spring and Fall Semester. Students’ admission rate in BBA program is shown in Table 2 and Table 3.

Table 2: BBA Student Enrolment ins 2021/2022 (Spring Semester)

Semester (Spring)	Year				
	2017	2018	2019	2020	2021
I Semester	92	96	97	97	96
II Semester					85
III Semester	85	92	90	90	77
V Semester	81	85	82	82	89
VII Semester	72	81	71	77	80
Total	330	354	340	346	427

Table 2 shows the student enrolment trend in BBA program for the last five years i.e 2017 to 2021 in the Spring Semester. From the table, it is observed that the year spring 2021 recorded the highest numbers of students' enrolment (427). The reason of significant increment of the students in this particular year is because of inclusion of the overlapping of the semesters. A semester is delayed due to the impact of COVID 19. Year 2018 is in second position with the admission of 354 students. The year 2017 records the lowest enrolment (330). Students’ admission trend of the Spring Semester is depicted in Figure 3.

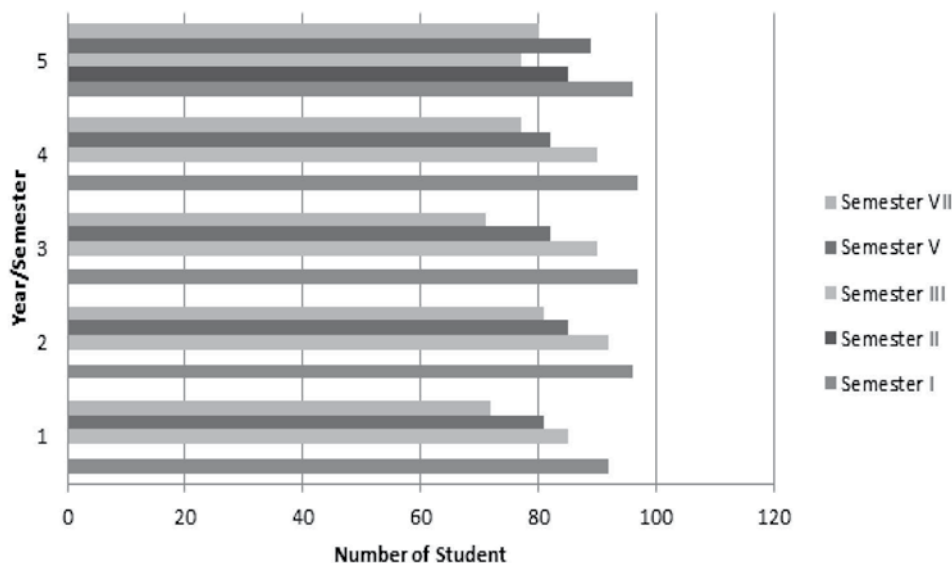


Fig. 3 BBA Student Enrolment ins 2021/2022 (Spring Semester)

Table 3: BBA Students Enrolment in 2021/2022 (Fall Semester)

Semester (Fall)	Year				
	2017	2018	2019	2020	2021
II Semester	91	91	90	85	93
IV Semester	79	91	85	88	80
VI Semester	82	79	82	82	88
VIII Semester	72	82	71	77	80
Total	324	343	328	332	341

Table 3 shows the student enrolment trend in BBA program for the last five years i.e 2017 to 2021 in the Fall Semester. It is observed in the table that the year Fall 2018 recorded the highest numbers of students' enrolment (343) and it follows with 341 students in the year 2021. The year 2017 records the lowest enrolment (324). Students' admission trend of the Fall Semester is depicted in Figure 4.

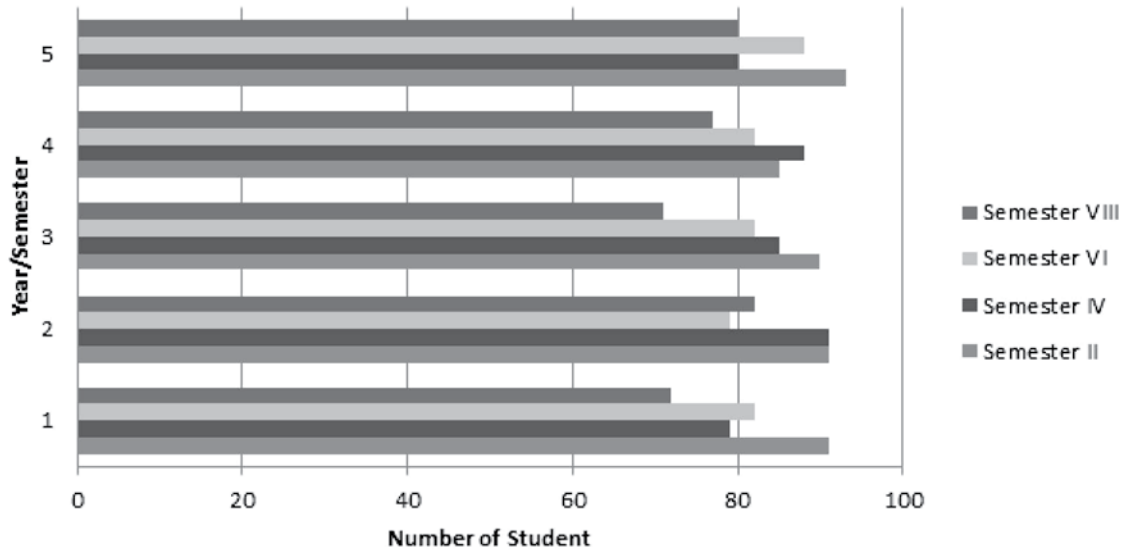


Fig. 4 BBA Students Enrolment in 2021/2022 (Fall Semester)

2.2.2.2 Students Enrolment in BBA-BI Program

Annual 48 students are enrolled in the BBA-BI program. The admission is opened for August intake. The program is operated in Semester system. Therefore, admission trend can be analyzed in two different semesters, Spring and Fall Semester. Student admission rate BBA-BI program is shown in Table 4 and Table 5.

Table 4: BBA-BI Students Enrolment in 2020/2021 (Spring Semester)

Semester (Spring)	Year				
	2017	2018	2019	2020	2021
I Semester	47	48	47	47	48
II Semester					41
IV Semester	36	47	37	37	43
VI Semester	38	36	45	28	32
VIII Semester	33	38	33	36	27
Total	154	169	162	148	191

Table 4 shows the student enrolment trend in BBA-BI program for the last five years i.e 2017 to 2021 in the Spring Semester. From the table, it is observed that the year spring 2021 recorded the highest numbers of students' enrolment (191). The reason of significant increment of the students in this particular year is because of inclusion of the five semesters. A semester is delayed due to the impact of COVID 19. Year 2018 remains in next position with the admission of 169 students. The year 2020 records the lowest enrolment (148). Students' admission trend of the Spring Semester is depicted in Figure 5.

Table 5: BBA-BI Students Enrolment 2021/2022 (Fall Semester)

Semester (Fall)	Year				
	2017	2018	2019	2020	2021
I Semester	46	47	42	47	48
III Semester	35	46	37	35	47
V Semester	37	35	43	28	32
VII Semester	33	37	33	36	27
Total	151	165	155	146	154

Table 5 shows the student enrolment trend in BBA-BI program for the last five years i.e 2017 to 2021 in the Fall Semester. From the table, it is observed that the year Fall 2018 recorded the highest numbers of students' enrolment (165) and it follows with 155 students in the year 2019. The year 2020 records the lowest enrolment (146). Students' admission trend of the Fall Semester is depicted in Figure 6.

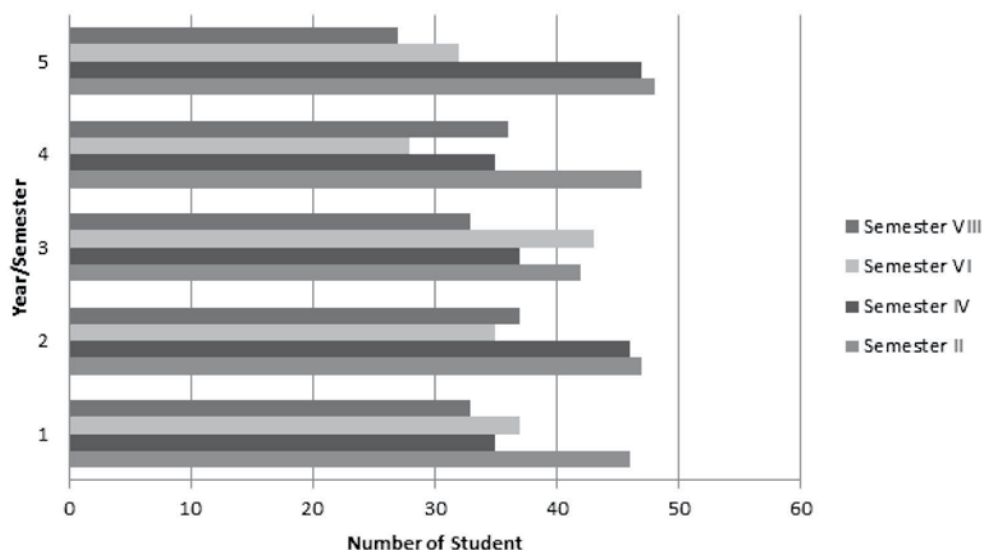


Fig. 6 BBA-BI Students Enrolment 2021/2022 (Fall Semester)

2.3 Pass Rate Trend

2.3.1 Exam Passed Students in BBA Program

Pass out rate in BBA Program is analyzed on the basis of number of students appeared in examination and pass out. It also covers the Semester wise number of male and female students. The analysis covers the four years data, presented in Table 6.

Year	Semester	Male		Female		Total		
		Exam Appeared	Passed	Exam Appeared	Passed	Exam Appeared	Passed	Pass %
First Year	First	52	21	41	36	93	57	61
Second Year	Third	46	30	34	30	80	60	75
Third Year	Fifth	38	30	50	46	88	76	86
Fourth Year	Seventh	32	30	46	47	80	77	96.25

Table 6 presents the pass percentage rate of students in BBA program for the academic year 2020/2021. The result reveals that the pass percentage by the end of the semester i.e seventh semester reached to 96.25%. Out of 80 exam appearing students in the seventh semester 77 students passed the examination. Likewise looking at the pass percentage, the trend of student passing the exam has significantly increased. It is also presented in Figure 7.

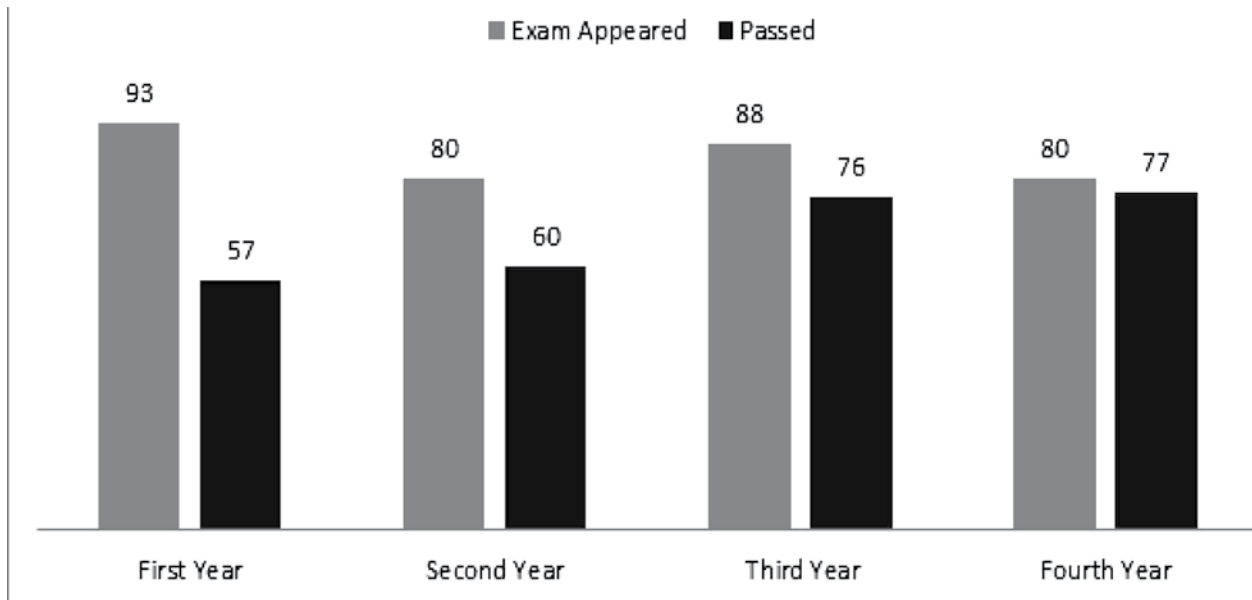


Fig. 7 Pass Rate in BBA for 2021/2022

2.3.2 Pass Rate in BBA-BI Program

Pass out rate in BBA-BI Program is analyzed on the basis of number of students appeared in examination and their result. It also covers the Semester wise number of male and female students. The analysis covers the four years data, presented in Table 7.

Year	Semester	Male		Female		Total		
		Exam Appeared	Passed	Exam Appeared	Passed	Exam Appeared	Passed	Pass %
First Year	First	24	2	22	6	46	8	17
Second Year	Third	18	8	29	18	47	26	55
Third Year	Fifth	8	5	24	17	32	22	68
Fourth Year	Seventh	11	8	16	9	27	17	62

Table 7 presents the pass percentage rate of students in BBA-BI program for the academic year 2020/2021. The result reveals that the pass percentage by the end of the semester i.e fifth semester reached to 68 percent. Out of 32 exam appearing students in the seventh semester 22 students passed the examination. Likewise looking at the pass percentage, out of 27 students 17 students (62%) passed the exam. In the first semester, the least number of students (17 percent) pass the exam. It is also shown in Figure 8.

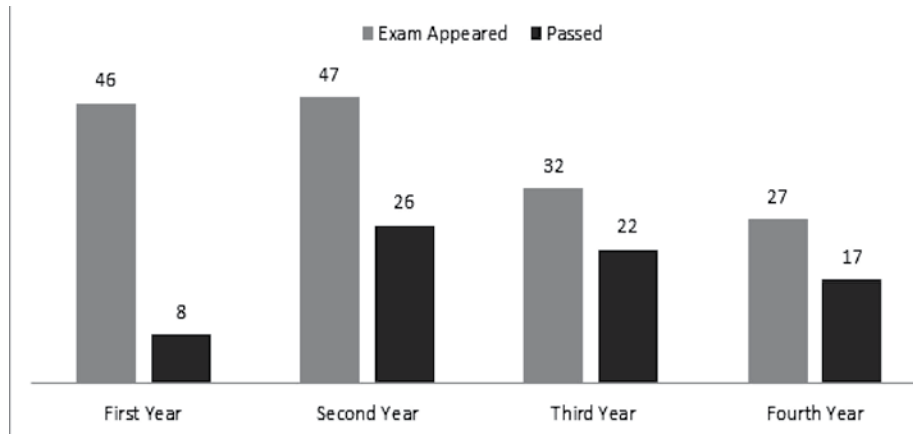


Fig. 8 Pass Rate in BBA-BI Program for the Academic Year 2021/2022

2.4 QAA Certification:

School of Business got a certificate of Quality Assurance and Accreditation (QAA) from University Grants Commission (UGC), Nepal. UGC President Prf. Dr. Bhim Prasad Subedi provided the certificate in a special program at UGC, Kathmandu on 12 Ashar 2079 (June 26, 2022). To attend the award ceremony, a team of faculties and staff visited Kathmandu. To celebrate the happiness of QAA certification, School of Business Organized a special program 'QAA Institutional Certification Ceremony' on 30 Ashar 2079 (July 14, 2022). Prof. Dr. Prem Narayan Aryal, Vice Chancellor PU, chaired the seat of chief guest in program. Prof. Dr. Prem Narayan stressed the need of continuous improvement of management education to equip the students for leading multinational corporation as well as successful operation of self initiated enterprise.

Dr. Dipak Bahadur Bhandari, Registrar, Dr. Daya Raj Dhakal, Dean, Faculty of Management Studies and some other authorities were presence in the program. A students club under SOB, PUCMS handed over the gift to School of Business in the Program. Earlier than that, Peer Review Team (PRT) from UGC made follow-up visit to School of Business from 13 to 15 Chaitra 2078 and reviewed the SOB progress. The team was led by Prof. Dr. Kusum Shakya.

2.5 Educational Pedagogy

Teaching pedagogy at School of Business is a combination of various techniques such as tutorials, guest lectures, seminars, conferences, independent works, internship, field works, project works, researches, case studies, presentations, discussions, and many more.

Regular Lectures

With the combination of senior professors and young dynamic lecturers, the school provides pleasant & regular lectures as per the need of the curriculum along with session plan they have prepared in advance. Lecture sessions are interactive and facilitated by the faculty members to deliver in depth in the business studies. The class discussions are complemented with case analysis and presentations, reviews, and feedback of presentations, action learning through project works involving studies of real organization and practical internship.

Guest Lectures

The college regularly manages guest lecturers of professionals, practitioner, experts and experience personalities of various areas. The college arranges guest lecturers in four modalities: Pre- planned guest



lecturers to support the course and curriculum which should be spread over each and every semesters/trimester. Guest lecturers of the practitioners who reflect their practical experiences and exposures from their working life. Guest lecturers arranged to develop the students' soft skills and life skills. The guest lectures on the contemporary and emerging issues in business, management and economics. The speakers for the guest lectures are invited from domestically and foreign countries.

Group Work

Students are exposed to group works of various kinds on regular basis with in and off the class hours. The faculties retain full authority to assign in-and off class group assignments as a part of internal evaluation in line with daily lesson-plan based on individual assessments. Groups are generally given special problems on various topics for the members to actively unfold solutions which are often analytical, survey based, literature review, and assessment types.

Presentation

With a view to complement the class discussions and lectures on varying topics, the study report presentation by students is a key pattern of teaching pedagogy at School of Business. Initiation is taken by the faculty members for the presentation on special topics in their subject areas when needed and every presentation is designed with the help of multimedia technology. The students are provided with technical and logistic support to prepare power point presentations on the topics assigned to them by the faculty as a part of internal evaluation.

Project Work

Project making is a core subject area for students to work individually as well as in groups at School of Business. Data based learning and research works are the key components of project work that help them search, compile, analyze and interpret the data.

It is compulsory for each MBA student to conduct an original research at the final trimester followed with scientific research methods and present the study report in the prescribed format of thesis to be acceptable by the university. This research project comprises of 3 credits. Graduate Research Project (GRP) is a partial requirement for the fulfillment of the MBA degree. A committee assigns supervisors to the students and frequently organizes seminars, trainings and workshops to both faculties and students under the theme of scientific research methods. The GRPs are supervised by the experienced professors. The college also invites the experts from organizations related to the research work for feedback and suggestions and also disseminates the findings to the concerns.

In Bachelors level, BBA and BBA-BI students prepare research papers and they have to present it in the viva-voce organized as a compulsory part of curriculum. The students prepare many research papers based on primary and secondary data during their study period in the college. The completion of Project Work is compulsory in BBA and BBA-BI program. The projects are generally related to the areas of banking, finance, industries and trading companies, and other enterprising institutions.

The school aims to develop the research skill of the students from very beginning. In order to strengthen the research capacity, the school offers Econometrics course which is rarely offered by other management colleges in Nepal. The school also organizes separate training on statistical software operations for data analysis.

Internship

The MBA, BBA and BBA-BI students are compulsorily required to undertake internship during their study. The internship is accredited in the main course areas over the fixed tenure given to each individual student. The aim is to grant the students an exposure to practical and professional learning through internship program.

Event Management

The school provides opportunity to manage events like international/national seminars, conferences, sports, cultural programs and competitive events so that the students learn how to work with responsibility. Besides, the students' club also organizes various events.

Case Study

Among various teaching methods, Campus emphasizes in using case study method both in bachelor and master level classes. Case studies are real business situations that are used as a teaching tool to show the application of a theory or concept to real situations. Dependent on the goal they meant to fulfill, cases can be fact- driven and deductive where there is a correct answer, or they can be context driven where multiple solutions are possible. The instructors can create their own cases or can find cases that already exist in order to enhance the students' learning through active participation. It largely enhances problem solving and decision- making skills of students.

Group Discussion

Another teaching tool adopted by the school is group discussion where students debate in particular issue in structured way. They create and discuss on possible solutions and their effects on certain issues. Sometime, articles are reviewed before starting discussion. It enhances conceptual and communication skills.

Article Review

Under this method students are provided articles related to their syllabus, they study it and present to each other. Presentation, discussion and idea generation is centered to particular article. Instructor searches and provides relevant articles from different journals.

Role Play

Teachers are trained to use role play method to make learning effective and interesting. This method could be used along with group discussion, where students give ideas from the view point of particular character only, with article review and lecture. It enhances expression skill in different way.

Educational Tour

Educational tours are occasionally organized for students and academicians as well where they can meet different people and situation. Such tours are combined with study and research activities of students as well. The school provides budget for educational tours.

2.6 Evaluation and Examination

The school has designed a format of internal evaluation comprising the components based on activities and academic performance. The internal marking is entirely controlled by the concerned teaching faculty and for this purpose, the bases are attendance, class participation, homework completion and submission, assignments, field works, project works, case analyses, and presentations are taken into consideration. In order to give emphasis to the written examinations, the college conducts regular unit tests, quizzes, mid-term and pre-board examinations. In undergraduate level, the feedback of the academic performance of the students is also communicated to the guardians and the concern faculty also provides advice for improvement in the case of slow learners. Even extra classes, tutorials and re-examination provisions are arranged for needy and slow learners. Finally, the students have to appear the University Board Examinations controlled by the Office of the Controller of Examinations of Pokhara University.

Assessment or evaluation of students' knowledge and skills is an integral part of the education system all over the world. The assessment system needs to find out what exactly the students have learnt and to what extent they have mastery over the subject matter and skills they have learnt. The evaluation system is equally important for all levels of students i.e. from school to university. Evaluation system may include different methods such as formal physical examination, practical examination, assignment, interview, observation etc. which are generally used in practice.

A formal physical examination has been most commonly used assessment system before the outbreak of the COVID-19 pandemic. The pandemic has forced the educational institutions of the world to perceive the evaluation system differently as it has limited the applications of the physically proctored mode of the examination system. At early period of this academic year, there was impact of COVID – 19 that compelled to

adopt the alternative examination in Time-Bound Hybrid mode as guided by "Pokhara University Directives for Alternative Evaluation, 2021". Time-Bound Hybrid Examination refers to the written examination conducted by the Office of the Controller of Examinations, Pokhara University. During examination, students are strictly prohibited to use reference materials such as books, notebooks, handouts, websites, etc. except the necessary materials prescribed by the Office of the Controller of Examinations. In addition to written examination, face to face viva-voce was conducted online mode using a certain online platform such as Microsoft Teams, Zoom, or any other platforms that can record audio and video of the online interview/viva-voce. Online Interview/Viva-Voce carries 30 percent weight of the total evaluation of the students. The physical examination in the class room setting was conducted in a new-normal period.

3. PHYSICAL PROGRESS

3.1. Infrastructure Development

The Institute has well-furnished Lecture Rooms, Laboratories, Common Rooms, and Independent Computer Labs. School has a tie up with hostels for girls students. The campus has high speed broad band Internet facility. Central library has good ambience with an adequate seating capacity. It has large number of books and subscriptions of National and International journals. The computer laboratories are well equipped with latest high-end desktops. Teaching-learning is being enhanced by implementing video lectures and by arranging workshops, seminars. There is a generator power backup availability.

The School monitors the adequacy and optimum use of facilities available in the institution to maintain the quality of academic and other programs. The development of the infrastructure and the physical facilities available thus keep pace with the overall development of the institution. There is an effective mechanism for the maintenance of the infrastructure facilities. The school has an excellent library and computer facilities with easy access to all its constituents. Approximately the library comprises of 35,573 books on several disciplines. The library is accessible from 7:00 am to 5.00 pm. Spacious reading room, open access to e-learning, foreign and Nepali research journals/magazines and research cubicles with internet connections cater to the needs of students and staff. ICT facilities are adequately available in the institution for academic purposes.

3.2 Educational Aid

Educational equipment, infrastructure facilities and physical aids available in SOB is presented in Table 8.

Table 8 : Educational Aid

S. N.	Particulars	Quantity
1	Office Room	10
2	Class Room	12
3	Computer Lab	2
4	Seminar Hall	2
5	Three Faculty Rooms (With Separate Cubical)	23
6	First Aid Room	1
7	IQAC Room	1
Furniture		
1	Bench	185
2	Desk	210
3	Cupboard	28
4	White Board/Smart Board	15
5	Office Table	42
6	Computer Table	18

7	Chair	94
8	Book Shelves	12
9	Sofa Set	7
10	File Cabinet	14
Equipment		
1	Desktop	84
2	Laptop	48
3	Multimedia Projector	20
4	Server	1
5	Printer/Multifunctional Machine	19
6	Photocopy machine	1

3.3 Books, Journals and References

Pokhara University Central Library (PUCL) was established along with the academic programs of University in 1999. It began with a collection of 200 volumes of books. Now, the collection exceeds more than 36000 volumes of books (Including gift). In addition, there are the collection of periodicals, thesis and CDs, journals, e-journals, magazines and newspapers. This library is automated with Mumolas software where all internal tasks such as; book and patron management are being carried out by the software. Since last year 2078 B.S. RFID system has been applied by Library. For security purpose, library has been using CCTV cameras and alert gate with rfid system. As the library is an academic library, the main purpose of this library is to provide service to faculties, staff and student and researcher.

The main function of this library is to provide, information, resources and research support for its members. Including books, Library has been collecting Dissertation; Term report, ebooks, E Journal both physically and electronically. Now the library is growing day by day with its prompt collection.

Our library is member of national and International Organization for Online Resources , We are member in NeLIC; and Research4 life.

More than 40 journal database can access via Research4life and Jstor can access via NeLIC. Central Library has subscribed for both Research4life and Nelic.

Library has created its own digital repository where master and bachelor level full text dissertation has been uploaded. Similarly, to provided bibliographic information of dissertation PUCL has created its own blog: www.pucl.wordpress.com Student can get all title of Dissertation via this blog. The list of available books is presented in Table 9.

Table 9: Area-wise Book Details in 2078/079

S N	Particulars	Total Purchased/ Books Till Date	Remarks
1.	Management Books	14877	Including the gifted books
2.	Engineering Books	9967	
3.	Health Science Books	8286	
4.	Humanities & Social Science Books	2443	
5.	Total purchased books	35573	

4. FINANCIAL PROGRESS

The financial progress of School of Business for last three years, 2076/77, 2077/78 and 2078/79, is presented below. The school made the surplus for the year 2078/79. It was also closer to cover all the expenses in the year 2077/78. The financial position of SOB is shown in Table 10.

Table 10: Financial Analysis of last Three Year

Income Head/financial Year	2076/077	2077/078	2078/079
Fee from Academic Activities			
Income from Academic Activities	37,079,482.00	39,245,724.00	42,620,171.00
Miscellaneous Income	375,910.00	607,440.00	663,758.00
Grants And Donation			
Grants received from Pokhara University	5,19,180.48	524,521.60	467,505.81
Grants & Donation received from UGC	700,000.00	5,035,570.66	6,630,000.00
Grants & Donation from Other Grants	-	-	
Other Income			
Interest Income	2,400,828.43	1,473,955.35	2,002,928.41
Total Income	41,075,400.91	46,887,211.61	52,384,363.22
Expenses Head/financial Year			
Regular Operating Expenditure			
Employee Cost	42,045,553.24	44,242,605.36	41,264,107.93
Operating Cost	4,241,545.00	3,047,455.27	5,321,658.00
Capital Expenditures			
Vehicle	-	-	-
Furniture & Fixture	22,500.00	65,065.00	212,000.00
Equipment	80,040.00	96,062.00	445,000.00
Books	-	-	-
Other Fixed Assets	432,120.00	-	59,900.00
Software	145,205.00	-	-
Total Expenses	46,966,963.24	47,451,187.63	47,302,665.93

5. SOCIAL PROGRESS

5.1 Innovation, Participation & Celebration

Silver Jubilee Celebration: SOB faculties and staffs participated in various events and training programs on the occasion of the Silver Jubilee of Pokhara University in different dates within the year, 2021/2022 (2078/2079). On the PU Day, central office organized a closing ceremony inviting the university founders and distinguished guests. Former position holders and contributors to the university were awarded with special recognition in the occasion. Vice Chancellor, Prof. Dr. Prem Narayan Aryal chaired the program.

Teachers Appointment: Four teachers are appointed in contract and 15 teachers are in course contract basis because of the 17 faculties are in study leave. A semester is delayed and five semesters are running at a time due to the effect of Covid 19 pandemic.

Guest Faculty Invitation: Professors, entrepreneurs, professionals and social leaders from different filed were invited as guest faculties and they took the classes in graduate and undergraduate level. Some notable Professor are Dr. Mahananda Chalise, Dr. Pushakar Bajracharya and entrepreneurs Ms. Sushma Thapa Pande, Rajendra Sharma, Brahma Kumari, Amrita Subedi and Brahma Kumar Jati Raman Bhatrarai.

Refreshment Tour: Nine SOB staffs participated in the five days refreshment tour. They visited different touristic and religious places within the country.

5.2 Committee and Cell Activities

Research Management Cell (RMC), Editorial Board of Journal of Business and Management (JBM), Self Assessment Team (SAT), Corporate Relation and Placement Cell, Faculty Research Committee, PUSOB Alumni Cell, Student welfare and career counselling Cell and Education Management Information System (EMIS) Cell performed different activities in their respective area.

Research Management Cell and Faculty Research Grant Committee

The committee has been performing research related activities and providing the research grants to SOB faculties. In this year, five faculties completed their research work and got the final installment of their grants. Similarly, eight research proposals were approved and the recommendation was made for the payment of first installment. The completed research work and their topics are presented in Table 11.

Table 11 : Researcher and their Research Topic

S. No.	Researcher	Research Topic
1	Ghanashyam Tiwari	Pricing Decisions and Use of Cost Accounting Information in Hotel Industry in Pokhara
2	Yog Raj Lamichhane	Rhetorical Culture and Brand Slogan: An Analysis of the Slogan of Commercial Banks from Nepal
3	Bibek Karmacharya	Impact of Service Quality Dimensions on Customer's Satisfaction in Nepalese Financial Institutions: Evidence from Servperf Model
4	Deepak Ojha	Impact of Leadership Style on Organizational Culture at Education Institutions in Pokhara
5	Shanti Devi Chhetri and Rabindra Prasad Baral	Factors Affecting Career Progression of Women in the Higher Education Sector: A Study of Higher Educational Institutional in Pokhara

Journal Editorial Board

The editorial board published JOURNAL OF BUSINESS MANAGEMENT - JBM (ISSN:2350-8868), Volume VI, an academic journal published in this year 2022. The volume includes eight research articles including the international authors. Journal of Business and Management is indexed in NepJol in 2019. The individual article has assigned the DOI number in this volume. The detail link of the journal is available at <https://www.nepjol.info/index.php/jbm>

Graduate Research Project Committee

Necessary guidance and supervision are being provided to the MBA students for preparing their synopsis, proposal, field work and report by this committee. 85 students completed their Graduate Research Report after defending final viva with external examiners.

Project Work Committee

The committee made necessary arrangement for supervision, guidance and evaluation of Project Report of BBA and BBA-BI students. The committee also supported to coordinate and correspondence to the Management related Journals for publication.

Self Assessment Team (SAT)

SAT completed the necessary requirements that were suggested by UGC, Peer Review Team (PRT), on the basis of online interaction between School of Business and PRT held on 13th October, 2020. The School of Business submitted the response report and action plan to the UGC and the PRT's follow up visit commenced on 27th – 29th March, 2022. School of Business succeeded to get the certificate of Quality Assurance and Accreditation (QAA) only after submitting the recommendation report by PRT to University Grants Commission, Nepal.

Education Management Information System (EMIS) Cell

EMIS Cell has updated the records of newly admitted students of BBA/BBA-BI and MBA Program. It also supported to select the best internet service provided to the school. The unit updated and uploaded the different information of school of business.

Corporate Relation and Placement Cell

Corporate Relation and Placement Cell made the necessary arrangement for internship placement of undergraduate and graduate level students from their respective semesters and trimesters. The unit is searching the possibilities for extension of formal relationship in international level.

Student Welfare and Career Counseling Cell

The cell provided necessary supports to students' club for conducting their meeting and activities. Importantly, the cells bridges the linkage between faculties and students by appointing, empowering and motivating the two Class Representatives from each section of all semesters/trimesters of undergraduate and graduate programs.

Student Alumni Cell

With necessary coordination and support of Students Alumni Cell, PUSOB Alumni Association conducted Alumni Meet in 18 December, 2021. The meet reformed the executive committee and prepared its upcoming plan. After the budget speech of government, the cell organized an open discussion inviting the economist, scholars and related personalities.

5.3 Students Activities

Student clubs are the forum to share their unique ideas. Basic objectives of these clubs is to address professional and business issues that are not included in formal program but are critical to management graduates and helpful to enhance the quality of education. Apart from the daily activities in class room students are encouraged for their involvement in extracurricular activities. By handling the different events and projects give the real work life experience to the students. The school assumes that extracurricular activities support to explore the inner potentialities and hidden talent of the students. Some student clubs have been performing various activities. Short description of the student clubs, Quality Circle, are as below.

Council of Students' Representative (CSR)

Two students from each section are nominated as the Class Representatives (CR). The representatives have been maintaining good coordination and communication among the students and teachers for smooth functioning of the teaching learning activities. CR contributes for collecting and forwarding the students' suggestion to the management that would be helpful to publish the internal examination routine, organize extracurricular activities and such other planning. They invite SOB Director and faculty members of Students Welfare and Career Counseling Cell in their regular meeting. BBA/BBA-BI Students Performed the dance in the opening Ceremony of in Lekhnath Trade Fair – 2022.

There are 30 class representatives in Bachelors level and 22 in the Masters level. A council of Students Representatives (CSR) comprises total 52 members. A president is elected by the members as a focal person.

Sunil Dhakal is appointed in the President of CSR after passing out MBA by Kushal Poudel in this year.

Pokhara University Council of Management Students (PUCMS)

PUCMS organized welcome program to newly admitted students in BBA and BBA-BI. The club conducted sports events e.g. War of Tow and Table Tennis. PUCMS congratulated to School of Business by providing a Painting for becoming SOB a QAA Certified Institution from University Grants Commission (UGC) Nepal. Jayanti Subedi is appointed in the President after successful completion of the tenure of Anil Basaula.

Sharing Harmony in New Environment (SHINE)

SHINE organized two days book fair in December 2021 and May 2022. In this event interested students could buy the books in reasonable price that were sold by seniors. The club also conducted two days SPSS Training to the students in IAC centre. They invited SOB faculties as a resource person. Anita Adhikari is appointed in the president of the club after successful completion the tenure by Vidya Rimal and Kabita Thapa respectively.

Study Group for Banking and Insurance (SGBI)

Membership of Study Group for Banking and Insurance (SGBI) is provided to the SOB students who have been studying in Bachelor of Business Administration in Banking and Insurance (BBA-BI) in School of Business. SGBI organized a talk program on Budget FY 2079/80 by inviting the economists, entrepreneurs and professionals next day of the Budget Speech of Finance Minister. The club conducted an interaction program on varieties of insurance policies in the presence of representatives from different insurance companies. Dipesh Bhujel was elected in the President as a successor of Naba Raj Sapkota.

Involvement Development Evaluation Achievement and Success (IDEAS)

Involvement Development Evaluation Achievement and Success (IDEAS) was established to encourage and motivate the students for establishing their own enterprise and succeeding in their career. Sunil Dhakal is the president of this club.

The student clubs that are performing various activities is shown in Table 12.

Table 12: Clubs Name and their Representative

S.N.	Club Name	Name of Student	Program
1	Council of Students' Representative (CSR) Chair	Sunil Dhakal	MBA
2	Council of Students' Representative (CSR) Member	Suprim Khanal	BBA
3	Council of Students' Representative (CSR) Member	Anusha Gyawali	BBA-BI
4	Pokhara University Council of Management Students (PUCMS)	Jayanti Subedi	BBA
5	Sharing Harmony in New Environment (SHINE)	Anita Adhikari	BBA
6	Study Group for Banking and Insurance (SGBI)	Dipesh Bhujel	BBA-BI
7	Involvement Development Evaluation Achievement and Success (IDEAS)	Sunil Dhakal	MBA

5.4 International Relations

A team of 8 members including six faculties of School of Business visited to participated a Seminar/Workshop in Manila, Philippines under ERASMUS Project in last week of June 2022. The visit was headed by Dr. Daya Raj Dhakal, Dean, Faculty of Management Studies. The project is preparing to launch Master's Program in Family Business Management among its partner universities from different countries. The seminar/Workshop designed a standard course structure that will be applied in different countries. An observation visit was made to Swornim University and Ahemdabad Management Association by 2 Faculties from SOB in October 2021.

A team of NIA Korea visited to our university and renewed the IAC contract for next five years. School of Business participated, as a Co-host, in Stamford International Conference, Thailand (online mode) for 2 days

10 – 11 May, 2022. A team of Professors from Indian Universities visited to SOB and they interacted for an hour with BBA 5 Semester students in the area of career opportunities for Management graduates.

5.5 Faculty Development Initiative

School of Business has been supporting faculties for pursuing their academic advancement. During the year 2078/79, eight SOB faculties were granted the study leave and they have been pursuing PHD in different national and international universities. Now, seventeen SOB faculties are in study leave.

5.6 Research and Publications

Significant number of research and publication of SOB faculties, and their participation in national and international conference was found in this duration. Faculties' contribution in the research area and dissemination of the information is presented as following.

Publication

- Bal Ram Bhattarai & Manoch Prompanyo (2022). Exploring Service Quality and Visitors' Complaining Behavior of Nepalese Tourism Industry. *Journal of Business and Management*, Vol. VI (1), 2022. DOI: <https://doi.org/10.3126/jbm.v6i01.46638>
- Bharat Raj Wagle & Ram Prasad Ghimire (2021). Performance Analysis of Service System in Health Care Network. *Nepal Journal of Mathematical Science*, 2 (2), 23-34.
- Bhart Ram Dhungana (2021). *Microfinance for Financial Inclusion*. Asmita Books Publishers and Distributors, Kathmandu, Nepal.
- Bishwo Raj Parajuli (2022). 'No' means 'NO': A Critical Discourse Analysis of the Image of 'Bad girls' in Chowdhary's Pink. *Journal of Business and Management*, VI (1), 64-73. DOI: <https://doi.org/10.3126/jbm.v6i01.46636>
- Deepanjali Shrestha (2022). *Information and Communication Technology, Digital Media And Society* (ISBN No.: 978-93-90728-72-5). Lucknow, UP, India: Vandana Publications.
- Deepanjali Shrestha, Tan Wenan, Bijay Gaudel, Neesha Rajkarnikar, & Seung Ryul Jeong (2022). Analysis and Evaluation of TripAdvisor Data: A Case of Pokhara, Nepal. In: Vasant P., Zelinka I., Weber GW. (eds) *Intelligent Computing & Optimization*. ICO 2021. Lecture Notes in Networks and Systems, vol 371. Springer, Cham. https://doi.org/10.1007/978-3-030-93247-3_71
- Deepanjali Shrestha, Tan Wenan, Bijay Gaudel, Neesha Rajkarnikar, & Seung Ryul Jeong (2022). Multi-dimensional Analysis and Prediction Model for Tourist Satisfaction. *KSII Transactions on Internet and Information Systems (SCIE, Scopus)*, 16 (2), 480-502. DOI: 10.3837/tis.2022.02.007.
- Deepanjali Shrestha, Tan Wenan, Deepmala Shrestha, Neesha Rajkarnikar & Shova Niroula (2021). Analysis of ICT Infrastructure and Tourism Informational Needs: A Case Study of Nepal, *International Journal of Innovative Research in Computer Science & Technology (IJIRCST)*, Vol-9, Issue 6., November 2021, ISSN 2347 - 5552, DOI: 10.21276/ijircst.2021.9.6.1
- Deepanjali Shrestha, Wenan Tan, Bijay Gaudel, Deepmala Shrestha, Neesha Rajkarnikar & Seung Ryul Jeong (2021). Preliminary analysis and design of a customized tourism recommender system, *Lecture Notes on Data Engineering and Communications Technologies*, Edition: 2, Publisher: Springer, Singapore.
- Deepesh Ranabhat & Bharat Ram Dhungana (2021). Micro-credit for the Small Enterprises Development: A Case of Kaski District. *Prithivi Academic Journal*, 4, 27-38.
- Deepesh Ranabhat & Bharat Ram Dhungana (2022). Impact of Microcredit on Micro-Enterprise Development: A Case of Gandaki Province of Nepal in *JOURNAL OF EMERGING FINANCIAL MARKETS AND POLICY*, VOL. 1, NO. 1, MARCH 2022
- Deepesh Ranabhat (2021). Socio Economic Impact Social Security Allowance on Recipients: A Case Study of Kaski. *Nepalese Journal of Insurance and Social Security*, 4 (1).
- Deepesh Ranabhat, Hemkanta Poudel & Mala Ranabhat (2022). Awareness and Usage of Internet Banking Facilities in Pokhara Metropolitan, Nepal. *Journal of Business and Management*, VI (1), 18-30. DOI: <https://doi.org/10.3126/jbm.v6i01.46634>

- Deepesh Ranabhat, Narinder Verma, Devesh Kumar & Hotniar Siringoringo (2022). The adoption of digital financial inclusion in developing countries: a systematic literature review in *International Journal of Electronic Finance* 11 (2), 117-142, 2022
- Dipak Neupane & Santosh Kumar Gurung (2021). Influence of Parental Socio-Economic Status on Students' Academic Performance: Experience from Pokhara University, Nepal (SOB FRG). *International Journal of Multidisciplinary Perspectives in Higher Education*, 6 (2), 50-67, <https://ojed.org/index.php/jimphe/article/view/3946>
- Neesha Rajkarnikar & Deepanjali Shrestha (2021). A Pilot Study on the Impact of ICT and New Media on Society and Culture, *International Journal of Innovative Research in Engineering & Management (IJIREM)*, Vol-8 [Issue. 6.], November. 2021. ISSN 2350-0557. doi:10.21276/ijirem.2021.8.6.21
- Neesha Rajkarnikar & Deepanjali Shrestha. (2021). Prospect and Challenges of Off Seasonal Tomato Production: A Case Study of Pokhara, Kaski, Nepal. *Istanbul Scientific Research Congress*, December 2021, In book: *International Istanbul Scientific Research Congress Book*, Edition: 7, Publisher: ISPEC PUBLISHING HOUSE
- Neesha Rajkarnikar, Deepanjali Shrestha & Deepmala Shrestha (2021). Measuring the satisfaction level of Nepalese postgraduate students under Chinese Government Scholarship Program, *INTERNATIONAL "BAŞKENT" CONGRESS ON PHYSICAL, SOCIAL AND HEALTH SCIENCES*, December 2021, In book: *INTERNATIONAL "BAŞKENT" CONGRESS ON PHYSICAL, SOCIAL AND HEALTH SCIENCES PROCEEDINGS BOOK*, Edition: 3, Publisher: INTERNATIONAL BAŞKENT CONGRESS.
- Rabindra Ghimire (2021). Willingness to Pay and Expected Benefits for Social Health Insurance: A Cross-sectional Study at Pokhara Metropolitan City, *Journal of Medicine and Medical Sciences*, 1(1), 41-49
- Ram Krishna Chapagain, Bharat Ram Dhungana, Bibek Karmacharya (2022). Factors Influencing Investment Decision of Employee Working on Financial and Non-financial Sector: A Case of Pokhara Metropolitan City, Nepal. *Journal of Nepalese Business Studies* 15 (1), 27-45.
- Ram Krishna Chapagain, Santosh Kumar Gurung, Dipesh Ranabhat, Subas Adhikari & Pramisha Gurung (2022). Relationship between training effectiveness and work performance: mediation of workplace environment. *Quest Journal of Management and Social Science*, 4 (1), 56-68.
- Santosh Kumar Gurung (2021). Influence of Parental Socio-Economic Status on Students' Academic Performance: Experience from Pokhara University, Nepal. *International Journal of Multidisciplinary Perspectives in Higher Education*, 6 (2), 50-67. <https://ojed.org/index.php/jimphe/article/view/3946>
- Santosh Kumar Gurung (2022). Factors Influencing Career Choice among Business Administration Students of Pokhara University. (2022), *The Batuk, Journal of Interdisciplinary Studies*.
- Santosh Kumar Gurung (2022). Teachers' Perception of Online Teaching and Factors Influencing Intention to Use Online Platforms during COVID-19. *Prithvi Academic Journal*, 5(1), 71–87. <https://doi.org/10.3126/paj.v5i1.45042>
- Santosh Kumar Gurung, Ram Krishna Chapagain, Dipesh Ranabhat, Rabindra Prasad Baral, Bhandari P, Thapa S (2022). Institutional Determinants of College Choice Decision among Business Administration Students of Pokhara University in Nepal. *Journal of Education and Research* 12 (2) 37-60.
- Shanti Devi Cheetri, Santosh Kumar Gurung, Ram Krishan Chapagain, Sharma S., Dangi N B (2021). Online Learning during the Covid-19 Pandemic: A Web-Based Survey of Undergraduate Students of Pokhara University, Nepal. *Quest Journal of Management and Social Sciences*, 3 (2), 119-129. <https://doi.org/10.3126/qjmss.v3i2.41579>
- Subash Malla, Laxman Thapa, Amrit Thapa, Ram Chandra Bhandari & Asha Rijal (2022). Laboratory Management on Students' Performance in Physics for Undergraduate Engineering Students. *American Journal of Engineering Research (AJER)*, 11 (4).
- Sujata Adhikari & Deepesh Ranabhat (2022). Uses of Social Security Allowances on Socio-Economic Status of

People in Kaski. Journal of Business and Management, Vol. VI (1), 74-85. DOI: <https://doi.org/10.3126/jbm.v6i01.46637>

Yog Raj Lamichhane (2021). Rhetorical Culture and Brand Slogan: An Analysis of the Slogans of All Commercial Banks from Nepal. Journal of Nepalese Business Studies, 14 (1), 40-53.

Conference and Workshop Participation

Bharat Raj Wagle, presented a paper on 'Closed Queueing Network Analysis of Vehicle Sharing in a City' National Conference on Mathematics and Its Application, 11-13 June 2022, Nepal Mathematical Society.

Dr. Bharat Ram Dhungana, Boston National Research Conference (BNRC – 2021), 27 November 2021, Chitwan.

Durga Prasad Chapagain, presented a paper on 'An Integrated Rural Energy Management for Sustainability: Influencing Factors' International Conference of Mechanical, Materials and Renewable Energy, Sikkim Manipal Institute of Technology, 11-12 February 2022.

Shanti Devi Chhetri, National Conference on Business Startup Innovation and Entrepreneurship, National Institute of TTTR Chandigarh, December 2021.

Dr. Rabindra Ghimire, National Conference on Agriculture Insurance, in Agriculture, Ministry of Agriculture and Livestock, 10 -11 March 2022.

Faculties participated the workshop in 'Different dimension of Entrepreneurship Development and Promotion Strategy' organized by Tillottama Chamber of Commerce, Rupandeni'.

Faculties participated in the workshop in 'Latest Innovations in Sustainable Engineering and Technology' organized by United Technical College, Bharatpur, Chitwan, Nepal (2021).

6. REGULAR ACTIVITIES

School of business executed student enrollment, their orientation, academic tour, socialization, examination and extracurricular activities in a regular basis. Some them are mentioned as below.

- Modification of Computer lab to run the classes as a semester has been overlapped due to Covid 19. Admission of MBA students in August & March session.
- Ninety-five students in BBA and 47 in BBA-BI Program got admission timely.
- One hundred twenty students got admission in MBA program.
- RMC, Editorial Board, SAT, Placement Cell, Corporate Relation Cell, Faculty Research Committee, PUSOB Alumni Cell, Students Counseling and Professional Cell, EMIS Cell etc. has been reformed.
- Kripa Kunwar Appointment in BBA/BBA-BI Program Coordinator after the approval of study leave of Ram Krishna Chapagain.
- Semesterend examination (online & physical) was conducted as accordance to Examination Schedule.
- BBA/BBA-BI 1st Semester, Orientation Program was organized, 28 April 2022.
- MBA 1st and 2nd Trimester Orientation and Socialization Program, 1 June 2022.
- Nineteen students of BBA-BI, 7th Semester participated in the 5 days Industrial Tour in November 2021.
- Seventy-seven students of BBA 5th Semester participated in 5 days Industrial Tour in December 2021.
- Socialization program was conducted to MBA 1st Trimester students in December 2021.
- Socialization and motivational program was organized among the BBA/BBA-BI Second Semester students in 7 March 2022.
- Twenty-five students of MBA 5th Trimester participated in 5 days Industrial Tour in December, 2021.
- The school provided necessary support to the pass-out students for participating their graduation ceremony, Convocation Program.
- Dr. Shrijan Gyanwali, Dr. Rabindra Ghimire and Deepanjali Shrestha joined a Workshop organized by Dean's Office, Faculty of Management Studies. All the PU affiliated colleges who are running Masters Program in Management participated the workshop 24-25 April, 2022, in Dhulikhel, Kathmandu.
- School Director participated in 'Revisiting Entrepreneurship Curriculum: An opportunity to fulfill

the pedagogical gap and creating best practice in Nepal' organized by Tribhuvan University at Khatmandu.

- School of Business published the Annual Report 2077/78 and 2078/79.
- Computer, laptop, printer, furniture and such other equipment's were purchased and repairing and maintenance activities were executed as per the requirement.
- Ten projectors were fixed in the class room. Teachers do not need to carry the projector in those class rooms.

7. ISSUES AND CHALLENGES

7.1 Issues

- Bureaucratic structure of the University
- Lack of autonomy in formulation of its policies and strategy as the school has to get university approval in all major activities.
- Non-reflective curriculum as per the business changes and developments in the nation Opportunities
- Non-optimal utilization of ICT facilities
- Propensity of faculties to use conventional teaching pedagogies
- Bottleneck in program extension because of lack of classrooms and other amenities.

7.2 Challenges

- Shortage of Space for existing program (BBA/BI, MBA) and new program
- Overlapping Semesters/ Trimesters due to Covid-19 Impact
- Lack of teaching infrastructure (MMP, Smart Board, Furniture)
- Lack of discipline (difficult to organize students' tour)
- Insufficient number of staff.

7.3 Mitigation Strategies

- Space management is made through the shift system class timings.
- Immediate shortages of the human resources are managed through course contract and full-time contract faculties.
- Planning for launching city-based programs
- Planning for adequate space for sports and recreational activities.

7.4 Plan for Addressing the Issues and Challenges

- A master plan is prepared for construction of new building in Pokhara 30, Musetuda, to meet the need of physical facilities of academic building.
- Performed the scheduled activities as mentioned in the academic calendar.
- Need to replace old furniture by modern furniture and furnishing, modern class set up with educational equipments.
- Need to formulation and implementation of code of conducts by faculties and staffs.
- Fulfillment of the Administrative Assistant and Office Helpers.



Annex 1: Budget for the Fiscal Year - 2079/80

पोखरा विश्वविद्यालय

स्कूल अफ बिजनेस, व्यवस्थापन अध्ययन संकाय

आ. व. २०७९/८० को स्वीकृत बजेट

रु हजारमा

बजेट कोड तं.	बजेट शिर्षक	आ. व. २०७७/७८ को वास्तविक खर्च	आ. व. २०७८/७९ को वास्तविक खर्च	आ. व. २०७९/८० को स्वीकृत बजेट
५०१००	पूँजिगत खर्च			
५०१०१	जग्गा			
५०१०२	जग्गा विकास			
५०१०३	भवन			
५०१०४	सवारी साधन			
५०१०५	फर्निचर		२१२	८६७
५०१०६	कार्यालय उपकरण		२०७	४१०
५०१०७	वैज्ञानिक तथा शैक्षिक उपकरण	६५	२३८	८६१
५०१०८	सडक, ढल, पर्खाल			
५०१०९	विद्युत तथा पानी			
५०११०	विविध सम्पत्ति	९६	६०	६४५
५०१११	सफ्टवेयर निर्माण, खरिद			२००
५०२०१	पुस्तक			
	जम्मा	१६१	७१७	२,९८३
२०१००	संचालन खर्च			
२०१००	शिक्षक, कर्मचारी खर्च			
२०१०१	तलब शिक्षण	२३,४९७	२१,८९८	३६,५००
२०१०२	तलब र खर्च: गेष्ट फ्याकल्टी	२१	६५	६००
२०१०३	तलब प्रशासन	५,४२०	५,८८५	९,५००
२०१०४	संचयकोष अनुदान	२,५२७	२,३२१	३,३१०
२०१०५	उपदान पेन्सन	२,२४९	२,१६१	३,०५०
२०१०६	दक्षता अभिवृद्धि सुविधा	४,९१४	३,७६३	५,२५०
२०१०८	भत्ता तथा सुविधा	९५६	७३८	१,३००
२०११०	लुगा भत्ता	३५०	२८०	५१०

२०१११	चाडपर्व खर्च	२,१२७	१,९०७	३,०२०
२०११२	यूटिलिटी । उपयोगिता खर्च	३२	३१	११०
२०११३	औषधि, उपचार खर्च			
२०११४	जीवन बीमा खर्च	२६२	२३४	३१०
२०११५	विदा वापत रकम	१,८८२	१,९६९	२,६५०
२०११७	पत्रपत्रिका तथा टेलिफोन सुविधा खर्च	६	१२	१८
२०११८	घर भाडा भत्ता			
	जम्मा	४४,२४३	४१,२६४	६६,१२८
२०२०१	परीक्षा संचालन खर्च	३३८	८२३	१,६२४
२०२०३	परीक्षा केन्द्र संचालन खर्च			
२०२०४	घर भाडा			
२०२०५	विद्युत तथा पानी	४१	४१	७२
२०२०६	सेवा शुल्क खर्च	५६	२२७	९००
२०२०७	विज्ञापन तथा प्रचार	३३	४९	१८३
२०२०८	अतिथी सत्कार	६	२०२	४०
२०२०९	छपाई तथा मसलन्द	६०	६८	३४०
२०२१०	संचार तथा हुलाक महशुल	२७	२५	१०७
२०२११	कानुनी तथा व्यवसायिक परामर्श खर्च			
२०२१२	सवारी साधन ईन्धन खर्च	२६८	४२१	१,२९७
२०२१३	सवारी साधन मर्मत खर्च	१५६	११६	२,०००
२०२१४	मर्मत तथा सम्भार	१९९	३८०	१,३००
२०२१५	पत्र पत्रिका खर्च	६	५	६५
२०२१६	विमा खर्च	७४	५६	१००
२०२१७	भ्रमण खर्च	११३	१७२	७५३
२०२१८	लेखा परिक्षण शुल्क तथा खर्च		१२	४०
२०२१९	वैठक तथा भत्ता खर्च	८३	२९७	४७५
२०२२०	शुल्क तथा फि			
२०२२१	बैंक चार्ज	१		१०
२०२२३	इनाम तथा पुरस्कार			१०
२०२२४	दीक्षान्त, उत्सव तथा समारोह खर्च	३	२२	५०

२०२२५	कार्यालय खर्च	१२७	२४६	५४०
२०२२६	प्रकाशन खर्च	३	१४७	४२५
२०२२७	विद्यार्थी कल्याण	४	९३४	१,९००
२०२२८	अनुसन्धान खर्च		३६	८००
२०२२९	छात्रवृत्ति खर्च	४९८	८०४	१,०३४
२०२३०	शैक्षिक सामग्री	१२	१३०	३००
२०२३१	मानव संसाधन विकास			८००
२०२३२	गोष्ठी तथा सम्मेलन	६०	५०	१,४००
२०२३३	पठक्रम निर्माण र परिमार्जन			
२०२३४	विविध खर्च	८७८	४८	१,०८०
२०२३५	प्रयोगशाला सम्बन्धी खर्च			
२०२३६	अन्य भाडा खर्च		९	५०
२०२३७	मूल्याङ्कन तथा निरीक्षण खर्च			
२०२३८	कर खर्च			
२०२३९	नयां कार्यक्रम संवन्धन तथा सम्बन्ध विस्तार खर्च			
	संचालन खर्चको जम्मा	३,०४६	५,३२०	१७,६९५
	शिक्षक कर्मचारी खर्च जम्मा	४४,२४३	४१,२६४	६६,१२८
	पूँजीगत खर्च	१६१	७१७	२,९८३
	कुल व्यय जम्मा	४७,४५०	४७,३०१	८६,८०६

पोखरा विश्वविद्यालय

स्कूल अफ विजनेस, व्यवस्थापन अध्ययन संकाय

आ. व. २०७९/८० को स्वीकृत आय

रु हजारमा

बजेट कोड नं.	आय शिर्षक	आ. व. २०७७/७८ को वास्तविक खर्च	आ. व. २०७८/७९ को वास्तविक खर्च	आ. व. २०७९/८० को स्वीकृत बजेट
10100	आंगिक कार्यक्रमबाट आय	३९,२४६	४२,६२०	५०,०६३
10200	सम्बन्धन कार्यक्रमबाट आय	-	-	
10300	अनुदान तथा सहयोग	५,०३६	६,६३०	५,८००
10400	ब्याज आय	१,४७४	२,००३	१,०००
10600	विविध आम्दानि	६०७	६६४	३००
	आय जम्मा	४६,३६३	५१,९१७	५७,१६३

Annex 2

List of the Faculty Members

SN	Name	Degree	Subject	Designation
1.	Prof. Hari Bahadur Khadka	PhD Ongoing	Finance	Professor
2.	Prof. Dr. Gyaneshwor Sharma	PhD	Accountancy	Professor
3.	Deepak Bahadur Bhandari	PhD	Finance	Associate Professor
4.	Deepak Raj Paudel	PhD	Statistics	Associate Professor
5.	Bal Ram Bhattarai	PhD Ongoing	Marketing/ Sociology	Associate Professor
6.	Daya Raj Dhakal	PhD	Management	Associate Professor
7.	Umesh Singh Yadav	PhD	Marketing	Associate Professor
8.	Surya Bahadur G.C.	PhD	Finance	Associate Professor
9.	Rabindra Ghimire	PhD	Finance	Associate Professor
10.	Bharat Ram Dhungana	PhD	Finance/ Economics	Associate Professor
11.	Bishwo Nath Lamichhane	PhD Ongoing	English	Lecturer
12.	Deepmala Shrestha	PhD Ongoing	General Management	Lecturer
13.	Purna Bahadur Khand	PhD	Economics	Lecturer
14.	Shrijan Gyanwali	PhD	Marketing/ Entrepreneurship	Lecturer
15.	Deepanjali Shrestha	PhD Ongoing	Computer Science and Technology	Lecturer
16.	Nirajan Bam	PhD Ongoing	Statistics	Lecturer
17.	Bishwo Raj Parajuli	PhD Ongoing	English	Lecturer
18.	Santosh Kumar Gurung	PhD Ongoing	Sociology	Lecturer
19.	Yog Raj Lamichhane	PhD Ongoing	English	Lecturer
20.	Bibek Karmacharya	MBA	Finance	Lecturer
21.	Deepak Neupane	PhD Ongoing	Economics	Lecturer
22.	Durga Prasad Chapagai	PhD Ongoing	General Management	Lecturer
23.	Ram Krishna Chapagain	PhD Ongoing	Finance	Lecturer
24.	Kripa Kunwar	MBS	Finance	Lecturer
25.	Pradeep Sapkota	PhD Ongoing	Marketing	Lecturer
26.	Deepesh Ranabhat	PhD Ongoing	Finance/ Economics	Lecturer
27.	Shanti Devi Chhetri	PhD Ongoing	Management	Lecturer
28.	Subarna Bir Jung Bahadur Rana	MBA/MBS	Marketing	Lecturer
29.	Hem Kanta Poudel	MBS	Accountancy	Lecturer
30.	Deepak Ojha	MBS	Accountancy	Lecturer
31.	Aashish Thapa	PhD Ongoing	General Management	Lecturer
32.	Rabindra Prasad Baral	PhD Ongoing	Accountancy	Lecturer
33.	Bal Chandra Poudel	MM	General Management	Lecturer
34.	Sujita Adhikari	MBA	Marketing	Lecturer
35.	Ghanashyam Tiwari	MBS	Accountancy	Lecturer
36.	Bharat Raj Wagle	PhD Ongoing	Mathematics	Lecturer
37.	Ram Prasad Timilsina	MBA	Management	Lecturer

SN	Name	Degree	Subject	Designation
38.	Ujjal Adhikari	MBA	Management	Lecturer
39.	Subash Malla	MBA	Management	Lecturer
40.	Keshav Lamichhane	MA	Math	Lecturer
41.	Hom Bahadur Chhetri	MPhil Ongoing	Economics	Lecturer
42.	Jiban Bhandari	MBA	Management	Lecturer
43.	Suraj Gharti	Masters in MIS	Management Information System	Lecturer
44.	Suresh Raj Dhakal	MA	English	Lecturer
45.	Sunil Dutta Baral	MA	Economics	Lecturer
46.	Pushpanjali Bhandari	MA	Management	Lecturer
47.	Manju Subedi	MA	Mathematics	Lecturer
48.	Sujana Acharya	MBA	Management	Lecturer
49.	Bijaya Sigdel	MBA	Management	Lecturer
50.	Dipendra Pahahi	MA	Sociology	Lecturer
51.	Pushpa Raj Koirala	MA	Psychology	Lecturer
52.	Ram Prasad Tharu	MA	Mathematics	Lecturer
53.	Yuba Raj Subedi	MA	English / HRM	Lecturer
54.	Neesha Rajkarnikar	MCA, MPGD	Computer & IT	Lecturer
55.	Bipana Ale	MBA	Management	Lecturer



Annex 3

List of the Administrative Staff

Administrative Staff				
SN	Name	Designation	Academic Degree	Type of service
1	Sita Devi Dhakal	Deputy Administrator (Account)	MBA	Permanent
2	Radha Parajuli	Assistant Administrator (Admin)	MPGD	Permanent
3	Pramod Giri	Assistant Administrator (Admin)	MA Economics TU MA Political Science TU MPA TU	Permanent
4	Debaki Dahal	Head Assistant (Admin)	MA Political Science	Permanent
5	Bandana Godar, Thapa	Head Assistant (Admin)	MA Economics	Permanent
6	Laxman Bastola	Assistant (Computer)	B.Ed.	Permanent
7	Shobha Acharya Pandit	Assistant	M.Ed	Permanent
8	Toran Bahadur B.K.	Assistant	BBS	Permanent
Support staff				
1	Ananda Paudel	Office Helper		Permanent
2	Jogiram Sarki	Office Helper		Permanent
3	Nirmala Nepali	Office Helper		Permanent
4	Shanta Devi Tiwari	Office Helper		Permanent
5	Shiva Bahadur Nepali	Driver		Permanent
6	Kalyan Raj Subedi	Helper		Service Contract



Annex 4 Graduate List

MBA Graduates

	Registration No.	Name of the Students	Program	Gender	CGPA	Exam Roll No.
1	2013-2-03-2070	Bipana Ale	MBA	F	3.97	18220189
2	2017-2-22-0552	Samiksha Kumari Gupta	MBA	F	3.96	17220452
3	2018-2-22-0290	Sandipa Kafle	MBA	F	3.94	18220218
4	2017-2-22-0541	Krishna Bahadur Thapa	MBA	M	3.94	17220440
5	2010-2-03-1614	Sebak Babu Shrestha	MBA	M	3.92	17220480
6	2016-2-22-0159	Rajendra Regmi	MBA	M	3.92	16220208
7	2016-2-22-0167	Suman Neupane	MBA	M	3.92	16220216
8	2017-2-22-0250	Tarannum Khatun	MBA	M	3.92	17220236
9	2018-2-22-0264	Ganga Palikhe	MBA	F	3.91	18220191
10	2017-2-22-0515	Nabaraj Bhandari	MBA	M	3.91	17220471
11	2017-2-22-0540	Kapil Baral	MBA	M	3.91	17220439
12	2017-2-22-0239	Sebika Shrestha	MBA	F	3.91	17220224
13	2013-2-03-2114	Bindu Tiwari	MBA	F	3.88	18220535
14	2016-2-22-0152	Nabin Paudel	MBA	M	3.88	16220201
15	2018-2-22-0286	Rupa Sharma	MBA	F	3.87	18220213
16	2017-2-22-0232	Sagun Pokhrel	MBA	F	3.87	17220218
17	2017-2-22-0196	Anju Shrestha	MBA	F	3.86	17220182
18	2017-2-22-0227	Ritu Ranabhat	MBA	F	3.86	17220212
19	2012-2-45-0459	Sujana Acharya	MBA	F	3.86	17220455
20	2013-2-03-2138	Sandhya Bhandari	MBA	F	3.85	18220217
21	2018-2-22-0262	Bikash Mahat	MBA	M	3.84	18220188
22	2017-2-22-0224	Raju Karki	MBA	M	3.83	17220209
23	2017-2-22-0241	Shova Acharya	MBA	F	3.83	17220226
24	2017-2-22-0242	Shraddha Sigdel	MBA	F	3.83	17220227
25	2018-2-22-0260	Babita Gurung	MBA	F	3.82	18220187
26	2017-2-22-0512	Krishna Sharma	MBA	M	3.82	17220468
27	2018-2-22-0606	Punam Sapkota	MBA	F	3.82	18220547
28	2017-2-22-0198	Anuj Bastola	MBA	M	3.82	17220184
29	2017-2-22-0249	Susmita Acharya	MBA	F	3.82	17220235
30	2017-2-22-0231	Sagun K.C.	MBA	M	3.81	17220217
31	2017-2-22-0233	Sailesh Acharya	MBA	M	3.81	17220219
32	2017-2-22-0549	Rinki Gurung	MBA	F	3.8	17220448
33	2017-2-22-0554	Santosh Lamichhane	MBA	M	3.78	17220454
34	2016-2-22-0169	Shushma Gurung	MBA	F	3.77	16220218
35	2017-2-22-0197	Anju Thapa	MBA	F	3.77	17220183
36	2018-2-22-0295	Subina Tiwari	MBA	F	3.76	18220226
37	2015-2-22-0146	Sagar Baral	MBA	M	3.76	15220183
38	2017-2-22-0542	Manisha Bohara	MBA	F	3.75	17220441
39	2016-2-22-0160	Ritu Banstola	MBA	F	3.75	16220209
40	2012-2-45-0454	Sadish Tiwari	MBA	M	3.75	17220214

41	2017-2-22-0550	Rojina Raibhat	MBA	F	3.73	17220449
42	2016-2-22-0161	Sagar Sedhai	MBA	M	3.73	16220210
43	2010-2-03-1610	Saphal Shrestha	MBA	M	3.73	16220084
44	2017-2-22-0208	Binita Gurung	MBA	F	3.72	17220194
45	2016-2-22-0151	Kiran Adhikari	MBA	M	3.72	16220199
46	2016-2-22-0114	Ajit Kumar C.K.	MBA	M	3.71	16220161
47	2017-2-22-0248	Sushma Subedi	MBA	F	3.71	17220234
48	2016-2-22-0150	Dhurba Bhattarai	MBA	M	3.69	16220198
49	2009-2-45-0285	Ishwor Bastola	MBA	M	3.69	14220546
50	2017-2-22-0234	Santosh Bagale	MBA	M	3.69	17220220
51	2017-2-22-0229	Sagar Aryal	MBA	M	3.68	17220215
52	2018-2-22-0276	Menuka Koirala	MBA	F	3.67	18220202
53	2018-2-22-0291	Saroj Bhandari	MBA	M	3.67	18220221
54	2018-2-22-0303	Vivek Gurung	MBA	M	3.66	18220236
55	2017-2-22-0211	Bishal Basnet	MBA	M	3.66	12540004
56	2012-2-03-0757	Simran Singh Baral	MBA	F	3.66	17220228
57	2017-2-22-0251	Usha Tamang	MBA	F	3.66	17220237
58	2018-2-22-0256	Anita Poudel	MBA	F	3.65	18220182
59	2018-2-22-0268	Kabita Shrestha	MBA	F	3.65	18220195
60	2010-2-03-1025	Mina Poudel	MBA	F	3.65	16220200
61	2016-2-22-0158	Pratap Acharya	MBA	M	3.65	16220207
62	2016-2-22-0164	Sanjeev Bhandari	MBA	M	3.65	16220213
63	2016-2-22-0145	Bikash Adhikari	MBA	M	3.64	16220193
64	2017-2-22-0244	Sudip Dhakal	MBA	M	3.64	17220230
65	2016-2-22-0156	Parbata Acharya Kharti	MBA	F	3.63	16220205
66	2018-2-22-0614	Shruti Gurunga	MBA	F	3.63	18220557
67	2017-2-22-0205	Bijay Dhewaju	MBA	M	3.63	17220191
68	2017-2-22-0216	Goma Rana Chhetri	MBA	F	3.63	17220201
69	2016-2-22-0157	Pramila Shrestha	MBA	F	3.63	16220206
70	2017-2-22-0553	Sanjay Koiral	MBA	M	3.62	17220453
71	2017-2-22-0201	Aruna Khadka	MBA	F	3.62	17220187
72	2017-2-22-0222	Pushpa Raj Ojha	MBA	M	3.62	17220207
73	2018-2-22-0280	Prativa Timilsina	MBA	F	3.61	18220206
74	2018-2-22-0300	Sushma Pande	MBA	F	3.61	18220232
75	2017-2-22-0203	Avijit Budhathoki	MBA	M	3.60	17220189
76	2017-2-22-0207	Bimal Shrestha	MBA	M	3.6	17220193
77	2017-2-22-0209	Binita Poudel	MBA	F	3.6	17220195
78	2017-2-22-0219	MD Sahib Khan	MBA	M	3.6	17220204
79	2016-2-22-0171	Urmila Thapa	MBA	F	3.6	16220220
80	2015-2-22-0136	Monika Giri	MBA	F	3.59	15220172
81	2016-2-22-0137	Savi Pathak	MBA	F	3.59	16220185
82	2018-2-22-0266	Jitendra Thapa	MBA	M	3.58	18220193
83	2013-2-03-2091	Sanina Shrestha	MBA	F	3.58	18220219
84	2015-2-22-0105	Anil G.C.	MBA	M	3.58	15220190

85	2009-2-03-1509	Jiwan Bishwokarma	MBA	M	3.58	14220547
86	2016-2-22-0081	Sarita Baral	MBA	F	3.58	16220086
87	2018-2-22-0298	Sulochana Pandit	MBA	F	3.57	18220230
88	2015-2-22-0135	Manju Adhikari	MBA	F	3.57	15220171
89	2017-2-22-0531	Anjila Subedi	MBA	F	3.56	17220429
90	2016-2-22-0147	Bikash Tripathi	MBA	M	3.56	16220195
91	2015-2-22-0007	Mahima Shrestha	MBA	F	3.56	15220072
92	2016-2-22-0162	Sangam Paudel	MBA	M	3.56	16220211
93	2018-2-22-0257	Apekshya Uperkoti	MBA	F	3.55	18220184
94	2017-2-22-0521	Santosh Pahari	MBA	M	3.55	17220478
95	2016-2-22-0148	Bimal Kafle	MBA	M	3.54	16220196
96	2017-2-22-0538	Ganesh Kumar Sah	MBA	M	3.54	17220437
97	2013-2-03-1538	Sushmita K.C.	MBA	F	3.53	18220234
98	2017-2-22-0225	Ram Prasad Dahal	MBA	M	3.53	17220210
99	2012-2-03-0737	Roshani Sigdel	MBA	F	3.53	17220450
100	2016-2-22-0149	Bipana Baral	MBA	F	3.52	16220197
101	2017-2-22-0221	Pritimi Gurung	MBA	F	3.52	17220206
102	2017-2-22-0246	Sunil Shrestha	MBA	M	3.52	17220232
103	2017-2-22-0546	Paras Bhujel	MBA	M	3.51	17220445
104	2017-2-22-0247	Sushant Batajoo	MBA	M	3.51	17220233
105	2017-2-22-0504	Arjun Timilsina	MBA	M	3.50	17220459
106	2017-2-22-0526	Suraj G.C.	MBA	M	3.50	17220484
107	2017-2-22-0212	Deepa G.C.	MBA	F	3.5	17220198
108	2017-2-22-0548	Puja G.C.	MBA	F	3.5	17220447
109	2016-2-22-0129	Raksha Poudel	MBA	F	3.5	16220176
110	2017-2-22-0200	Aruna Khadka	MBA	F	3.48	17220186
111	2017-2-22-0528	Ajita Wagle	MBA	F	3.48	17220426
112	2017-2-22-0204	Bhupendra Devkota	MBA	M	3.48	17220190
113	2017-2-22-0230	Sagar Koirala	MBA	M	3.48	17220216
114	2017-2-22-0215	Gautam Sunar	MBA	M	3.47	17220200
115	2017-2-22-0544	Nisha Bhattarai	MBA	F	3.47	17220443
116	2014-2-22-0080	Rabindra Godar	MBA	M	3.47	14220555
117	2017-2-22-0240	Sharada B.K.	MBA	F	3.46	17220225
118	2017-2-22-0243	Srijana Poudel	MBA	F	3.46	17220229
119	2010-2-03-1589	Prabesh Raj Pageni	MBA	M	3.46	15220203
120	2015-2-22-0120	Sanjay Shilwal	MBA	M	3.46	15220210
121	2017-2-22-0213	Dhurba Raj Bogati	MBA	M	3.45	17220199
122	2017-2-22-0520	Samikshya Baral	MBA	F	3.45	17220475
123	2017-2-22-0535	Bikash Acharya	MBA	M	3.45	17220434
124	2009-2-03-1558	Srijana Panta	MBA	F	3.43	14220598
125	2017-2-22-0537	Bishnu Shrestha	MBA	F	3.42	17220436
126	2014-2-22-0081	Roshan Adhikari	MBA	M	3.42	14220556
127	2016-2-22-0120	Bhawana Koirala	MBA	F	3.41	16220167
128	2014-2-22-0078	Narayan Shrestha	MBA	M	3.4	14220552

129	2017-2-22-0245	Suniel Timilsena	MBA	M	3.40	17220231
130	2017-2-22-0516	Prashanta Singh Khadka	MBA	M	3.39	17220472
131	2017-2-22-0520	Samiksha Baral	MBA	F	3.38	17220476
132	2016-2-22-0155	Padam Kunwar	MBA	M	3.38	16220204
133	2017-2-22-0551	Sabita Adhikari	MBA	F	3.38	17220451
134	2016-2-22-0146	Bikash Shrestha	MBA	M	3.37	16220194
135	2017-2-22-0510	Divya Adhikari	MBA	F	3.37	17220465
136	2017-2-22-0517	Raju Timilsina	MBA	M	3.37	17220473
137	2017-2-22-0513	Manju Sapkota	MBA	F	3.36	17220469
138	2009-2-03-1495	Bishnu Prasad Gyawali	MBA	M	3.36	14220544
139	2016-2-22-0133	Sangam Baniya	MBA	M	3.36	16220181
140	2018-2-22-0292	Saroj Poudel	MBA	M	3.35	18220222
141	2009-2-03-1553	Shristi Karmacharya	MBA	F	3.35	14220597
142	2017-2-22-0539	Kamal Sharma	MBA	M	3.34	17220438
143	2015-2-22-0119	Sabina Subedi	MBA	F	3.34	15220209
144	2016-2-22-0163	Sanjay Khadka	MBA	M	3.34	16220212
145	2016-2-22-0119	Basudev Koirala	MBA	M	3.33	16220166
146	2018-2-22-0254	Amrit Bastola	MBA	M	3.32	18220180
147	2017-2-22-0226	Ranju Adhikari	MBA	F	3.32	17220211
148	2016-2-22-0075	Roshani Karki	MBA	F	3.32	16220078
149	2014-2-22-0091	Sushmita Palli	MBA	M	3.32	14220569
150	2017-2-22-0218	Kusum Baral	MBA	F	3.31	17220203
151	2016-2-22-0168	Surya Prasad Banstola	MBA	M	3.30	16220217
152	2014-2-22-0053	Bidur Lamsal	MBA	M	3.3	14220573
153	2015-2-22-0134	Mahesh Adhikari	MBA	M	3.29	15220170
154	2015-2-22-0113	Milan Devkota	MBA	M	3.29	15220199
155	2009-2-03-1782	Milan Pahari	MBA	M	3.29	14220582
156	2017-2-22-0545	Nisha Paudel	MBA	F	3.29	17220444
157	2016-2-22-0165	Shalikram Adhikari	MBA	M	3.29	16220214
158	2015-2-22-0149	Subash Malla	MBA	M	3.28	15220187
159	2014-2-22-0077	Nabin Subedi	MBA	M	3.26	14220551
160	2017-2-22-0543	Nira Baral	MBA	F	3.26	17220442
161	2016-2-22-0141	Subash Sapkota	MBA	M	3.25	16220189
162	2017-2-22-0199	Archana Pandit	MBA	F	3.23	17220185
163	2003-2-03-0246	Dipendra Chalise	MBA	M	3.23	10220011
164	2015-2-22-0117	Rajan Shrestha	MBA	M	3.23	15220206
165	2012-2-03-1868	Bhawana K.C.	MBA	F	3.22	17220432
166	2014-2-22-0084	Sagun K.C.	MBA	M	3.22	14220559
167	2009-2-22-0223	Yojana Timilsina	MBA	F	3.20	940179
168	2016-2-22-0166	Shraddha Parajuli	MBA	F	3.19	16220215
169	2014-2-22-0089	Sujan Bhujal	MBA	M	3.18	14220565
170	2017-2-22-0223	Rajesh Bastola	MBA	M	3.16	17220208
171	2016-2-22-0122	Dipa Sunar	MBA	F	3.16	16220169
172	2016-2-22-0131	Ram Chandra Pokhrel	MBA	M	3.15	16220178

173	2009-2-45-0305	Rohit Saru Magar	MBA	M	3.03	14220592
174	200102010212	Kiran Raj Lamichhane	MBA	M	3	740004

BBA Graduates

S.No.	Registration No.	Name of the Students	Program	Gender	CGPA	Exam Roll No.
1	2015-2-03-0246	Sristi Bhurtel	BBA	F	3.94	16032327
2	2016-2-03-2485	Bal Krishna Garbuja	BBA	M	3.91	17032707
3	2016-2-03-2499	Dikshya Mahat Chhetri	BBA	F	3.91	17032721
4	2015-2-03-0206	Manisha Khatri	BBA	F	3.90	16032287
5	2016-2-03-2553	Sundar Shrestha	BBA	M	3.75	17032774
6	2016-2-03-2503	Kabita Bhandari	BBA	F	3.72	17032725
7	2015-2-03-0183	Ashu Shrestha	BBA	F	3.69	16032264
8	2016-2-03-2498	Dhan Bahadur Gautam	BBA	M	3.68	17032720
9	2016-2-03-2494	Bishal Gautam	BBA	M	3.61	17032716
10	2016-2-03-2531	Rashna Chhetri	BBA	F	3.60	17032752
11	2015-2-03-0185	Asmita Paudel	BBA	F	3.57	16032266
12	2016-2-03-2534	Sabina Bhujel	BBA	F	3.53	17032755
13	2015-2-03-0222	Roshani Thapa	BBA	F	3.52	16032303
14	2016-2-03-2509	Mamata Ranabhat	BBA	F	3.51	17032731
15	2016-2-03-2539	Sandhya Dhungana	BBA	F	3.47	17032760
16	2016-2-03-2650	Bima Thapa	BBA	F	3.42	17031491
17	2016-2-03-2500	Diwash Poudel	BBA	M	3.41	17032722
18	2016-2-03-2492	Bikash Paudel	BBA	M	3.40	17032714
19	2015-2-03-0186	Bharosa Baral	BBA	F	3.39	16032267
20	2016-2-03-2554	Surakshya Subedi	BBA	F	3.38	17032775
21	2015-2-03-0184	Asmita Adhikari	BBA	F	3.38	16032265
22	2015-2-03-0228	Samita Basnet	BBA	F	3.37	16032309
23	2016-2-03-2489	Bhawana Ranabhat	BBA	F	3.35	17032711
24	2016-2-03-2516	Nirdosh Chapagain	BBA	M	3.31	17032738
25	2016-2-03-2544	Saroj Acharya	BBA	M	3.31	17032765
26	2016-2-03-2560	Swikriti Kuikel	BBA	F	3.31	17032781
27	2016-2-03-2483	Asmita K.C.	BBA	F	3.28	17032705
28	2016-2-03-2490	Bhawana Shrestha	BBA	F	3.27	17032712
29	2016-2-03-2512	Manisha Kshatry	BBA	F	3.27	17032734
30	2016-2-03-2528	Ramila Gharti Magar	BBA	F	3.27	17032749
31	2016-2-03-2552	Sundar Bhandari	BBA	M	3.27	17032773
32	2016-2-03-2475	Abhishek Shrestha	BBA	M	3.26	17032697
33	2016-2-03-2477	Ajay Thapa Chhetri	BBA	M	3.23	17032699
34	2016-2-03-2532	Rima Gurung	BBA	F	3.18	17032753
35	2015-2-03-0221	Roshani Bastola	BBA	F	3.18	16032302

36	2015-2-03-0211	Nisha Giri	BBA	F	3.16	16032292
37	2015-2-03-0233	Sandip Pandit	BBA	M	3.15	16032314
38	2015-2-03-0245	Srijana Bhurtel	BBA	F	3.15	16032326
39	2015-2-03-0262	Yam Prasad Gurung	BBA	M	3.15	16032343
40	2015-2-03-0178	Anusha Timilsina	BBA	F	3.14	16032259
41	2016-2-03-2517	Nischal Lamsal	BBA	M	3.13	17032739
42	2015-2-03-0252	Sumit Pande	BBA	M	3.13	16032333
43	2016-2-03-2557	Sushmita Chhetri	BBA	F	3.12	17032778
44	2016-2-03-2550	Smriti Acharya	BBA	F	3.11	17032771
45	2015-2-03-0182	Arun Kumar Gurung	BBA	M	3.09	16032263
46	2016-2-03-2515	Milan K.C.	BBA	M	3.03	17032737
47	2015-2-03-0229	Sandesh Timilsena	BBA	M	3.03	16032310
48	2016-2-03-2479	Anjana Sanu Bhujel	BBA	F	3.02	17032701
49	2016-2-03-2548	Shital Chhetri	BBA	F	3.01	17032769
50	2015-2-03-0193	Dinesh Lamichhane	BBA	M	3.01	16032274
51	2015-2-03-0244	Smriti Chhetri	BBA	F	3.01	16032325
52	2015-2-03-0236	Santosh Chapagain	BBA	M	3.00	16032317
53	2016-2-03-2526	Puja Acharya	BBA	F	2.99	17032747
54	2015-2-03-0256	Sunita Thapa Magar	BBA	F	2.97	16032337
55	2015-2-03-0188	Bindiya Bhujel	BBA	F	2.96	16032269
56	2014-2-03-2538	Kusum Poudel	BBA	F	2.96	15032395
57	2015-2-03-0241	Shova B.K.	BBA	F	2.96	16032322
58	2016-2-03-2559	Susmita Malla	BBA	F	2.95	17032780
59	2015-2-03-0200	Karuna Nepali Sarki	BBA	F	2.94	16032281
60	2015-2-03-0223	Rushina Malla	BBA	F	2.94	16032304
61	2015-2-03-0247	Subas Chandra Badu	BBA	M	2.94	16032328
62	2015-2-03-0174	Anil Adhikari	BBA	M	2.93	16032255
63	2015-2-03-0224	Sabina Gautam	BBA	F	2.92	16032305
64	2015-2-03-0234	Sanjaya Neupane	BBA	M	2.92	16032315
65	2015-2-03-0251	Sujan Bhujel	BBA	M	2.92	16032332
66	2016-2-03-2511	Manisha Dahal	BBA	F	2.91	17032733
67	2016-2-03-2519	Nutan Ghimire	BBA	M	2.91	17032741
68	2016-2-03-2530	Rashik Raibhat	BBA	M	2.91	17032751
69	2015-2-03-0217	Rashmi Gurung	BBA	F	2.91	16032298
70	2015-2-03-0177	Anupa Thapa	BBA	F	2.90	16032258
71	2015-2-03-0212	Pawan Bhandari	BBA	M	2.90	16032293
72	2015-2-03-0216	Ravi Sharma	BBA	M	2.90	16032297
73	2015-2-03-0235	Santosh Adhikari Chhetri	BBA	M	2.90	16032316
74	2015-2-03-0179	Apil Poudel	BBA	M	2.89	16032260
75	2015-2-03-0227	Salina Rana	BBA	F	2.87	16032308

76	2015-2-03-1362	Babita B.K	BBA	M	2.87	16030176
77	2015-2-03-0230	Sandhya Gurung	BBA	F	2.87	16032311
78	2016-2-03-2478	Anish Kumar Bhattarai	BBA	M	2.85	17032700
79	2016-2-03-2518	Nishma Purja Pun	BBA	F	2.85	17032740
80	2016-2-03-2513	Meena Poudel Chhetri	BBA	F	2.84	17032735
81	2015-2-03-0231	Sandhya Thapa	BBA	F	2.84	16032312
82	2016-2-03-2508	Krishna Bahadur Basnet	BBA	M	2.83	17032729
83	2016-2-03-2543	Saraswoti Subedi	BBA	F	2.83	17032764
84	2016-2-03-2488	Barsha Sunar	BBA	F	2.82	17032710
85	2016-2-03-2549	Shoesha Gurung	BBA	F	2.81	17032770
86	2015-2-03-0198	Kamana Sharma Bhattarai	BBA	F	2.81	16032279
87	2016-2-03-2527	Puja Shah	BBA	F	2.80	17032748
88	2015-2-03-0214	Prativa Sapkota	BBA	F	2.79	16032295
89	2015-2-03-0255	Sunita Basaula	BBA	F	2.79	16032336
90	2015-2-03-0180	Arjun Poudel	BBA	M	2.78	16032261
91	2015-2-03-0175	Anisha Adhikari	BBA	F	2.77	16032256
92	2015-2-03-0232	Sandip Bhandari	BBA	M	2.77	16032313
93	2015-2-03-0253	Sunil Dhakal	BBA	M	2.76	16032334
94	2016-2-03-2535	Sabitra Ghale	BBA	F	2.75	17032756
95	2016-2-03-2496	Deepa Poudel	BBA	F	2.74	17032718
96	2016-2-03-2522	Pradip Adhikari	BBA	M	2.73	17032743
97	2016-2-03-2524	Pratima Gurung	BBA	F	2.73	17032745
98	2016-2-03-2525	Priyanka Gurung	BBA	F	2.73	17032746
99	2016-2-03-2547	Shanti Giri	BBA	F	2.70	17032768
100	2012-2-03-0767	Sumitra Subedi	BBA	F	2.70	13032320
101	2016-2-03-2542	Saraswati Bhujel	BBA	F	2.69	17032763
102	2015-2-03-0258	Suvechchha Poudel	BBA	F	2.69	16032339
103	2016-2-03-2502	Jeevan Lamichhane	BBA	M	2.68	17032724
104	2015-2-03-0215	Prince Tulachan	BBA	M	2.68	16032296
105	2016-2-03-2486	Barsha Gurung	BBA	F	2.67	17032708
106	2016-2-03-2533	Sabina Adhikari	BBA	F	2.67	17032754
107	2016-2-03-2551	Sugam Raj Nepal	BBA	M	2.67	17032772
108	2015-2-03-0350	Anju Poudel	BBA	F	2.65	16031535
109	2016-2-03-2565	Yamuna Timilsina	BBA	F	2.64	17032786
110	2015-2-03-0257	Susma Chapagai	BBA	F	2.64	16032338
111	2015-2-03-0242	Shreya Acharya	BBA	F	2.63	16032323
112	2015-2-03-0210	Nikita Giri	BBA	F	2.62	16032291
113	2015-2-03-0190	Deepa Adhikari	BBA	F	2.61	16032271
114	2014-2-03-2539	Laxmi Adhikari	BBA	F	2.59	15032396
115	2015-2-03-0196	Jit Bahadur Thapa	BBA	M	2.59	16032277

116	2016-2-03-2510	Manisha Adhikari	BBA	F	2.56	17032732
117	2015-2-03-0189	Bishal Dahal	BBA	M	2.55	16032270
118	2014-2-03-2571	Sajan Poudel	BBA	M	2.55	15032428
119	2016-2-03-2507	Krishna Kafle	BBA	M	2.54	17032730
120	2015-2-03-0248	Subash Ghimire	BBA	M	2.51	16032329
121	2014-2-03-2574	Sanchhep Dwa	BBA	M	2.47	15032431
122	2015-2-03-2318	Nabina Shrestha	BBA	F	2.47	16031066
123	2013-2-03-2116	Jharana Nepali	BBA	F	2.45	14032099
124	2015-2-03-0176	Anup Adhikari	BBA	M	2.44	16032257
125	2015-2-03-0218	Rojina Adhikari	BBA	F	2.44	16032299
126	2012-2-03-0723	Pawan Ram Lamichhane	BBA	M	2.43	13032276
127	2014-2-03-2596	Udaya Subedi	BBA	M	2.39	15032453
128	2015-2-03-0238	Saraswati Thapa	BBA	F	2.38	16032319
129	2014-2-03-2565	Rishi Ram Chapagai	BBA	M	2.36	15032422
130	2015-2-03-0225	Sachina Thapa Magar	BBA	M	2.33	16032306
131	2015-2-03-0250	Sujan Baral	BBA	M	2.25	16032331
132	2015-2-03-0220	Roshan Tiwari	BBA	M	2.22	16032301
133	2014-2-03-2550	Nabins Sharma Lamichhane	BBA	M	2.22	15032406
134	2012-2-03-0733	Ramesh Chhetri	BBA	M	2.18	13032287
135	2014-2-03-2556	Prakash Subedi	BBA	M	2.18	15032413
136	2014-2-03-2586	Shreedhar Khanal	BBA	M	2.16	15032443
137	2016-2-03-2484	Astha Bhattarai	BBA	F	2.99	17032706

Graduate List BBA BI

S.No.	Registration No.	Name of the Students	Program	Gender	CGPA	Exam Roll No.
1	2015-2-45-0020	Anjali Poudel	BBA-BI	F	3.81	16450470
2	2015-2-45-0014	Abhijeet Kunwar	BBA-BI	M	3.68	16450464
3	2016-2-45-0562	Sita Bhujel	BBA-BI	F	3.59	17450590
4	2016-2-45-0556	Sangita Adhikari	BBA-BI	F	3.51	17450584
5	2015-2-45-0036	Manju Chhantyal	BBA-BI	F	3.49	16450486
6	2016-2-45-0563	Sudaya Poudel	BBA-BI	F	3.35	17450591
7	2015-2-45-0033	Jharana Gurung	BBA-BI	F	3.28	16450483
8	2015-2-45-0175	Adarsha Ghimire	BBA-BI	M	3.22	16450333
9	2016-2-45-0534	Dhurba Subedi	BBA-BI	M	3.16	17450563
10	2015-2-45-0043	Sabin Sharma	BBA-BI	M	3.15	16450493
11	2016-2-45-0540	Manisha Kunwar	BBA-BI	F	3.11	17450569
12	2016-2-45-0544	Pooja Bhandari	BBA-BI	F	3.06	17450573
13	2016-2-45-0546	Pratima Gautam	BBA-BI	F	3.06	17450574
14	2015-2-45-0032	Hima Pun Magar	BBA-BI	F	3.02	16450482
15	2015-2-45-0029	Bindu Khadka	BBA-BI	F	2.99	16450479
16	2016-2-45-0543	Pooja Adhikari	BBA-BI	F	2.98	17450572
17	2016-2-45-0541	Nirmala Shreesh	BBA-BI	F	2.97	17450570

18	2016-2-45-0558	Sanjeev Lamichhane	BBA-BI	M	2.94	17450586
19	2015-2-45-0041	Roma Rokaya	BBA-BI	F	2.94	16450491
20	2016-2-45-0559	Sapana Thapa Puri	BBA-BI	F	2.90	17450587
21	2015-2-45-0044	Sabina Tamang	BBA-BI	F	2.88	16450494
22	2016-2-45-0522	Abhilasha Paudel	BBA-BI	M	2.87	17450551
23	2015-2-45-0055	Sushmita Maraseni	BBA-BI	F	2.85	16450505
24	2016-2-45-0553	Sajani Basnet	BBA-BI	F	2.83	17450581
25	2015-2-45-0023	Barun Panthi	BBA-BI	M	2.78	16450473
26	2016-2-45-0539	Khem Kumari B.K.	BBA-BI	F	2.74	17450568
27	2016-2-45-0549	Rekha Karki	BBA-BI	F	2.71	17450577
28	2015-2-45-0027	Bina Baral Chhetri	BBA-BI	F	2.7	16450477
29	2015-2-45-0046	Samita Neupane	BBA-BI	F	2.69	16450496
30	2015-2-45-0050	Sharmila Rana	BBA-BI	F	2.68	16450500
31	2015-2-45-0054	Sujan Subedi	BBA-BI	M	2.67	16450504
32	2015-2-45-0022	Babita Shrestha	BBA-BI	F	2.66	16450472
33	2016-2-45-0551	Sabina Adhikari	BBA-BI	F	2.65	17450579
34	2013-2-45-0545	Sandesh Thapa	BBA-BI	M	2.62	14450550
35	2015-2-45-0052	Simran Thada Magar	BBA-BI	F	2.58	16450502
36	2015-2-45-0034	Mamata Shahi	BBA-BI	M	2.57	16450484
37	2015-2-45-0040	Nisha Khadka	BBA-BI	F	2.56	16450490
38	2015-2-45-0015	Abiskar Panthi	BBA-BI	M	2.52	16450465
39	2015-2-45-0048	Sandesh Dhakal	BBA-BI	M	2.52	16450498
40	2015-2-45-0021	Anshu Shrestha Pantha	BBA-BI	F	2.51	16450471
41	2016-2-45-0532	Binita Subedi	BBA-BI	F	2.51	17450561
42	2015-2-45-0039	Namrata Bhujel	BBA-BI	F	2.50	16450489
43	2014-2-45-0634	Sonu Pandey	BBA-BI	F	2.47	15450584
44	2015-2-45-0017	Anil K.C.	BBA-BI	M	2.44	16450467
45	2014-2-45-0632	Shrinkhala Baniya	BBA-BI	F	2.41	15450582
46	2016-2-45-0533	Bishal Gurung	BBA-BI	M	2.38	17450562
47	2015-2-45-0038	Milan Sharma	BBA-BI	M	2.38	16450488
48	2015-2-45-0030	Bipin Thapa	BBA-BI	M	2.36	16450480
49	2015-2-45-0019	Anita Khanal	BBA-BI	F	2.32	16450469
50	2013-2-45-0552	Sudip Giri	BBA-BI	M	2.32	14450557
51	2015-2-45-0025	Bibek Raj Tiwari	BBA-BI	M	2.31	16450475
52	2015-2-45-0053	Sudip Kandel	BBA-BI	M	2.27	16450503
53	2012-2-45-0460	Sulochana Poudel	BBA-BI	F	2.26	13450368
54	2015-2-45-0049	Sangita Sunar	BBA-BI	F	2.23	16450499
55	2015-2-45-0035	Mandip Tiwari	BBA-BI	M	2.22	16450485
56	2016-2-45-0537	Gita Acharya	BBA-BI	F	2.06	17450566
57	2016-2-45-0536	Ganesh Neupane	BBA-BI	M	2.03	17450565
58	2013-2-45-0547	Shyam Krishna Chaudhary	BBA-BI	M	2	14450553



POKHARA UNIVERSITY
FACULTY OF MANAGEMENT STUDIES
SCHOOL OF BUSINESS

Pokhara-30, Kaski, Nepal
Tel.: +977-61-504147/504035
E-mail : info@pusob.edu.np
Website: www.pusob.edu.np | www.pu.edu.np